

September 2017



**CAPITAL INFRASTRUCTURE NEEDS
FOR “COLONIAS” IN
DOÑA ANA COUNTY, NEW MEXICO**

OVERVIEW

The purpose of this report is to outline the scale of infrastructure investment needed in the *colonias* of Doña Ana County, which is located in south-central New Mexico (Illustration #1).

“*Colonias*” are communities on the U.S side of the international border with Mexico that have been formally designated as lacking critical infrastructure. Most are unincorporated. Doña Ana County contains 37 such *colonias* (Illustration #2).

Missing or inadequate infrastructure includes paved roads, domestic water supply, sewer systems, flood protection, and public facilities. These conditions adversely impact the health and quality of life in *colonias*—especially of low-income families, the elderly and children.

Substandard conditions impede public safety, discourage economic investment, and limit job opportunities. Inadequate wastewater systems increase the risk of aquifer contamination, and insufficient storm-water systems expose entire communities to catastrophic loss.

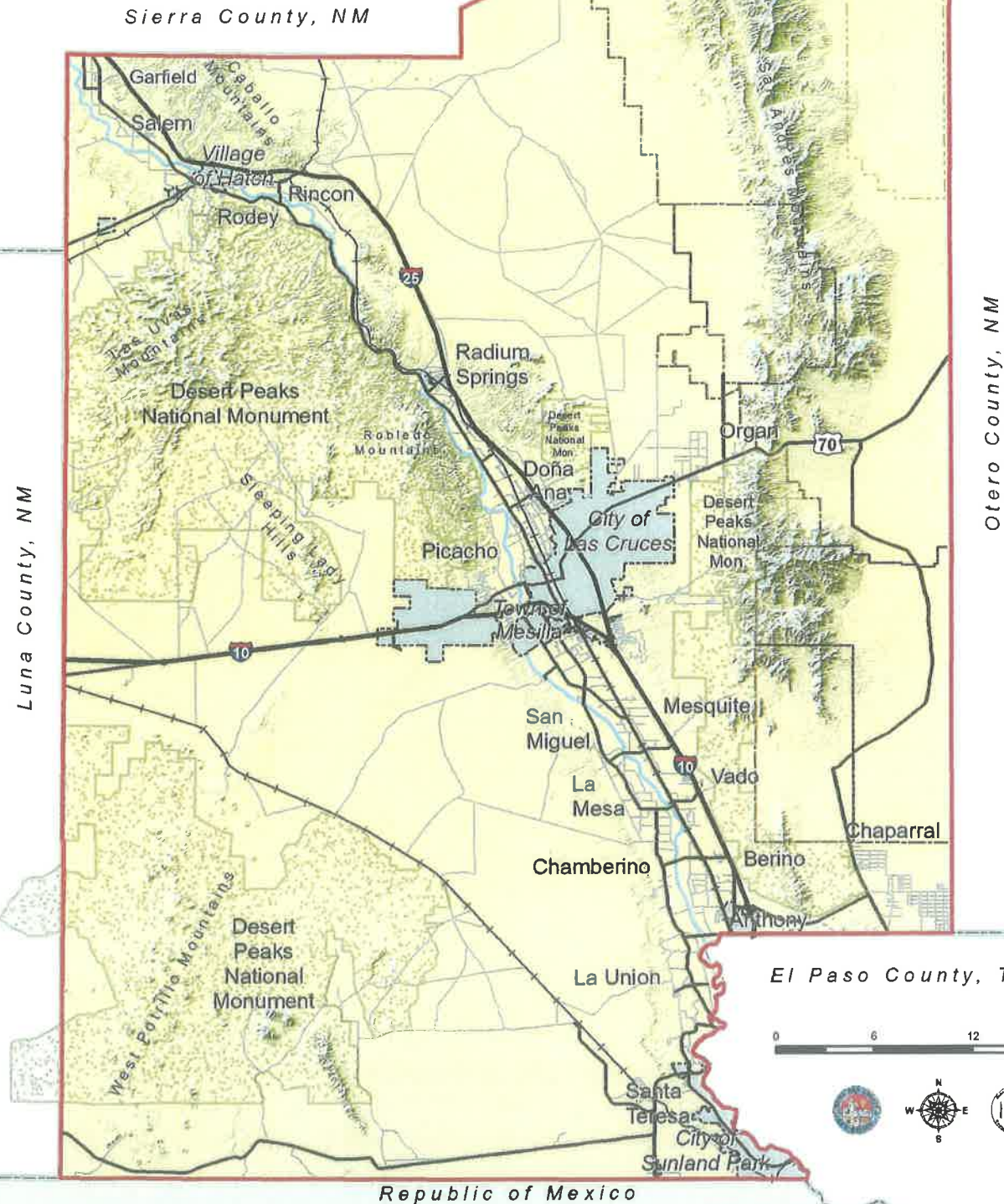
The County's 5-year Infrastructure Capital Improvement Plan (ICIP) is often used as a measure of this need. In fact, projects included in the 2019-2023 ICIP address less than 7% of the work needed to bring these communities up to standard.

Current estimates indicate that the cost for all necessary infrastructure improvements for which Doña Ana County government is directly responsible is more than half a billion dollars.

COUNTY INFRASTRUCTURE NEEDED IN COLONIAS

County Roads	\$ 81 million
Dam Repair & Upgrade	\$216 million (± \$24 million)
New Drainage Structures	\$133 million
Public Facilities	\$113 million
Wastewater System	\$ 34 million
Professional Services	\$ 29 million (5%)
Total Estimate	\$606 million

Doña Ana County, NM



CONTEXT

LOCATION

Doña Ana County is located in south-central New Mexico and is bordered to the south by El Paso, Texas and the Mexican State Of Chihuahua. The New Mexico counties of Otero, Sierra and Luna lie to the east, north and west respectively. Doña Ana County encompasses 3,804 square miles—an area larger than the states of Delaware and Rhode Island combined.

DEMOGRAPHICS

The population of Doña Ana County is about 209,000. The majority of the population is distributed along the Rio Grande corridor—a narrow band that runs approximately 90 miles north to south. Slightly less than one-half of the county population resides in 37 *colonias* and the surrounding rural area. The remaining population lives within one of five incorporated municipalities—including the City of Las Cruces, a charter city of 98,000 residents.

According the US Census Bureau, the County’s 2010-2014 median household income was \$38,426 with a 27.9% poverty rate.

PLANNING

In 2003 the County Board of County Commissioners established the *Model Colonias Initiative* to focus local, state and federal resources on improving infrastructure and quality of life in the *colonias*. Master plans for a number of *colonias* were developed as part of this program.

In 2012 the County began work on “*Viva Doña Ana!*”—a regional planning initiative underwritten by a \$2 million grant from the Regional Sustainable Communities Program (HUD-EPA-DOT). Eleven other governmental and non-profit entities partnered with the County in this effort. The initiative was based on intensive public engagement. Residents of *colonias* and non-English speakers were specifically encouraged to participate in the process.

The initiative has produced an update to the County’s Comprehensive Plan, a Unified Development Code, and a number of specialized plans for such issues as affordable housing, border economic development, and planning strategies for *colonias*. “*Viva Doña Ana!*” provides a broad framework for development of *colonias* within the context of the county as a whole.

INFRASTRUCTURE CAPITAL IMPROVEMENT PLAN (ICIP)

On an annual basis the County adopts an amended 5-year infrastructure capital improvement plan and provides it to the State of New Mexico. The County’s 2019-2023 ICIP includes 42 infrastructure improvement projects for *colonias* with an estimated cost of \$39.5 million (Appendix A).

Colonias in Doña Ana County, New Mexico

Recognized by the U.S. Department of Housing and Urban Development



September 2017
1 in = 9 miles



On average, 8-12 projects are funded each year and removed from the ICIP. New projects are then added and priorities may be reordered. Some of these projects are directly or indirectly associated with *colonias*. The rest are essential for County services or as support for economic development.

Comparison of ICIP lists over the past decade indicates that the rate of project funding and implementation does not keep up with new needs nor does it begin to significantly reduce the backlog of existing deficiencies.

FUNDING

COUNTY FUNDING FOR COLONIAS

Two of the largest sources of County revenue are property taxes and gross receipts taxes (GRT). Property tax rates are dictated by the State's Taxation and Revenue Department, and have not kept up with the needs of County residents because state law (*Yield Control*) limits year-to-year increases. Of the 6.75% GRT rate in Doña Ana County, over 82% goes to the State of New Mexico leaving the County with about 17%—which are largely designated for specific programs other than infrastructure.

These sources cover the cost of maintenance and repair of County infrastructure as well as providing the local match for state and federal grants.

STATE FUNDING FOR COLONIAS

State support for *colonias* infrastructure projects is available in one of two ways: through the Colonias Infrastructure Trust Fund (CITF) and direct appropriations in the State budget.

The CITF was established by the New Mexico Legislature in 2011 as a permanent source of funding for state grants dedicated to improving water and wastewater systems, solid waste disposal facilities, flood and drainage control, roads and housing infrastructure in *colonias*. From 2012 to 2015, the CITF has provided over \$20 million in support of 55 projects throughout Doña Ana County—or about \$4M per year. CITF grants are often combined with other funding sources to cover the cost of each project.

The other primary source of funding for capital projects is through direct appropriations requested by state legislators from the area or from the Governor. Funding is highly variable depending on fiscal conditions, and can be cut altogether as it was in FY 2016-17.

FEDERAL FUNDING

Most current federal funding involves loans that the County is challenged to repay and that county residents cannot afford. Some programs, such as through the Corp of Engineers, also impose cost-to-benefit requirements that do not fit the low population density and low-income levels associated with *colonias*.

FINANCIAL CHALLENGES

The current level of capital investment in *colonias* is grossly insufficient if these communities are to be made fully functional. The problem is intensified by modest population growth and associated demands on essential infrastructure.

In addition, according to the anti-donation clause in the New Mexico State Constitution, public funding cannot be used to improve deteriorated private roads that are common throughout *colonias* and are a major source of public concern.

Without major changes in the amounts of available funding—including expanded support for the professional services needed to properly design and oversee construction projects—government will have failed to carry out its fundamental obligation towards the residents of *colonias*, especially those living on low-incomes.

INFRASTRUCTURE SYSTEMS

The following section provides a brief overview of infrastructure systems in colonias for which Doña Ana County government is responsible. Each thumbnail sketch seeks to convey the scope of the issue as well as a reasonable cost estimate to complete all of the necessary work. Details are provided for the highest priority projects on the 2019-2023 ICIP list. (See: https://www.donaanacounty.org/colonias_infrastructure_report/)

COUNTY ROADS

The County is responsible for approximately 1,324 miles of road throughout its jurisdiction. Of these, 554 are paved and 770 are unpaved (Appendix B). There are also approximately 963 miles of private roads that are not maintained by the County: 240 are unpaved and 723 are paved.

One hundred forty-four (144) miles of unpaved roads are located within the colonias of Doña Ana County. The County is responsible for maintenance of slightly less than half of these unpaved roads.

Unpaved roads contribute to dust pollution and related health problems. They may also become flooded and deeply rutted after summer thunderstorms, making travel in and out of a *colonia* difficult for first responders, home health care providers, school buses, and workers. Poor road conditions are, in general, a disincentive for business investment in the *colonias*.

The estimated cost to improve all public roads serving the *colonias* is \$81 million.

DRAINAGE AND FLOOD CONTROL

Doña Ana County is located in the semi-arid Chihuahuan Desert in the Basin and Range Province of North America. The Rio Grande bisects the County diagonally from the northwest to southeast. Elevation in the County ranges from a low of around 3,700 feet up to around 8,900 feet above sea level. Rainfall averages 9.74 inches annually but can occur in torrential downpours (monsoon rain events) that can amount to over 3 inches in one event.

The Doña Ana County Flood Commission is responsible for stormwater management throughout much of the county (Appendix C). This includes twenty-four (24) recognized dams that provide flood hazard mitigation to *colonias*. Most of these structures are at or beyond their design life. For these structures to remain functional each will require an estimated \$8-10 million in repairs and upgrades: a total of \$216 million (plus or minus \$24 million).

The Doña Ana County Flood Commission has also completed seven (7) drainage master plans, has three under development, and a number more yet to be initiated. These plans include protective measures for a number of *colonias*. The estimated cost to construct improvements identified in the drainage master plans is approximately \$133 million. This amount is in addition to the dam improvement program outlined previously.

Implementation of some flood control projects will require modification of drainage structures that are owned by the Elephant Butte Irrigation District (EBID) or the International Boundary and Water Commission (IBWC). Funding needed for this work is not included in the estimates contained in this report.

COUNTY WASTEWATER UTILITY

In the early 1990s the Doña Ana County began a wastewater program for the unincorporated village of Doña Ana in cooperation with the City of Las Cruces. Since then, the County has constructed five wastewater treatment plants, appurtenant collection lines, and lift stations. In 2012 one of the wastewater treatment plants and related facilities was transferred to the Camino Real Regional Utility Authority (CRRUA)—a joint venture created by the County and the City of Sunland Park.

The County currently maintains four wastewater treatment plants, 121 miles of collection lines and 29 lift stations serving approximately 3,000 connections, of which about 98% are residential. These connections represent approximately 10% of the unincorporated population of the County (Appendix D).

The County is seeking funding to add additional collection lines and lift stations to serve Chaparral, the largest *colonia* in Doña Ana County, and other small *colonias* in the County's South Valley. System revenues, including a subsidy from the County's general fund, support operations and maintenance but are insufficient for system expansion. The cost to build out the system and make necessary improvements is estimated at \$34 million.

PUBLIC FACILITIES

Many public safety programs are housed in facilities distributed throughout the unincorporated sections of the County. New fire stations and law enforcement sub-stations are planned for several *colonias*. These facilities would serve each community as well as its surrounding area.

Construction of or improvements to community centers, and expansion of recreational facilities such as parks and walking paths are also desperately needed. Community centers are important locations for senior meals, educational programs, and youth activities.

Recreational facilities are integral to preventing chronic illnesses such as diabetes and hypertension—both of which are prevalent in rural communities. Development of these public facilities has been constrained by operational and maintenance requirements for which no reliable revenue sources have been identified.

In the interest of providing a comprehensive overview of infrastructure needs for *colonias* in Doña Ana County, we estimate that investments averaging \$75,000 in public facilities in 15 of the larger *colonias* would begin to address many of the needs in this arena.

OTHER CAPITAL NEEDS

The pressing nature of road improvements, flood protection, environmentally safe wastewater disposal, and public facilities tends to overshadow other *colonia* needs. However, investments are also needed in:

- Affordable housing,
- Public transit,
- Storm water drainage, and
- Broadband.

While the County may have a supportive role in development of the preceding systems, primary responsibility rests with other entities.

Similarly, except as noted above, the County is not responsible for:

- Domestic water supply, and
- Wastewater collection or treatment

The Caminio Real Regional Utility Authority (CRRUA) provides domestic water supply and wastewater treatment in the fast growing southern portion of Doña Ana County. Their systems are relatively antiquated and are in need of significant upgrading, replacement and expansion.

Associations of domestic water users supply most of the domestic water to unincorporated areas of Doña Ana County—including many *colonias*. Each of these quasigovernmental entities is responsible for pursuing infrastructure development funds on their own.

Cost estimates for the preceding types of infrastructure are not included in this report.

PRIVATE ROADS

Improvement and maintenance of privately owned roads are the most challenging problem for most residents of *colonias*. In addition to health and safety concerns, deteriorated private roads damage vehicles, depress property values, and contribute to the broadly held perception that all levels of government are intentionally ignoring these communities.

County government is prohibited from work on private roads by the “anti-donation” clause in the state constitution. With a few specific exceptions, this clause does not allow any use of state funds—directly or indirectly—to benefit private groups or individuals.

Private roads in *colonias* were typically created prior to regulations that require infrastructure as a condition of subdivision development. Rather than create a dedicated public right-of-way, every parcel adjacent to a roadway included an easement that allows traffic across the property and holds property owners responsible for maintenance of their section of the road.

While this approach may have reduced the capital needed to buy a lot, the practice left many *colonia* residents with responsibilities that they do not have the financial capacity to address.

In response to this situation, the County Commission has accepted the transfer of a few private roads—and the associated maintenance responsibility—at no cost to the property owners. This policy was suspended in 2015 pending resolution of questions about which private roads should be added to the county system and how large a road system the County could maintain.

The estimated cost to improve the non-County maintained (private) roads in the *colonias* is approximately \$84 million.

SHIFTING THE PARADIGM

Approximately 90,000 people live in Doña Ana County's 37 *colonias*. Many of these places are more than a century old. They are strong communities of multi-generational, hard-working people. They persevere in spite of substandard infrastructure that is completely unacceptable elsewhere in the county. This report outlines the types and magnitude of investment that are needed to address these deficiencies.

Significant investment is needed to address deficient infrastructure in Doña Ana County's 37 *colonias*. The current approach to infrastructure development is entirely inadequate if the public roads, water supply, wastewater systems, and public facilities in these communities are to be brought up to acceptable standards.

As a nation, sufficient wealth exists to ensure that rural residents can live in safe, affordable and supportive communities. Tax policy and public programs—at all levels—must ensure that the fundamental responsibility of government for *colonias* is fully understood, acknowledged and met.

Resolution of this issue will not be quick or easy. However, a responsible solution is possible if approached with sufficient political will and practical considerations. Based on the experience of Doña Ana County, the following ideas are offered as a guide to increased investment in *colonia* infrastructure:

- Develop a comprehensive, long-term strategy equal to the size of community needs.
- Aim for nothing less than sustained progress on an annual basis.
- Secure active buy-in and increased financial support at all levels of government:
 - Urge creation of a Federal initiative for *colonias* based on multi-agency partnerships & substantial appropriations.
 - Increase annual appropriations to the Colonias Infrastructure Development Fund
 - Revitalize Doña Ana County's "Colonias Initiative."
- Expand the County's capacity to develop and complete projects in a timely, responsive, and cost-effective manner.
- Actively engage residents, the private sector, and non-governmental organizations in *colonias* projects.

In recognition of these vital but marginalized communities, this report concludes with the recommendation that 2018 be declared the "Year of the Colonia." Working together—elected officials, County employees, community leaders, residents, and all other interested entities—will find the capacity to make *colonias* of Doña Ana County safer, healthier, and better places for those who live there.

--END--

APPENDIX

- A. INFRASTRUCTURE CAPITAL IMPROVEMENT PLAN (ICIP)
 - 2019-2023 ICIP LIST
 - PROJECT SUMMARIES

- B. ROADS & HIGHWAYS OF DOÑA ANA COUNTY
 - ROADS MAP
 - INVENTORY OF COLONIA ROADS

- C. STORMWATER MANAGEMENT
 - MAP OF DAMS & DRAINAGE MASTER PLANS
 - PROJECT SUMMARIES

- D. WASTEWATER MANAGEMENT SYSTEMS
 - WASTEWATER SYSTEMS REFERENCE MAP
 - PROJECT SUMMARIES

APPENDIX A

INFRASTRUCTURE CAPITAL IMPROVEMENT PLAN (ICIP)

- **2019-2023 ICIP LIST**
- **PROJECT SUMMARIES**

DONA ANA COUNTY 2019-2023 INFRASTRUCTURE CAPITAL IMPROVEMENT PLAN
COLONIAS PROJECTS ONLY

Colur	PROJECT	2019 REQUEST	TOTAL COST	DEPARTMENT
1	Dragonfly Channel	\$1,680,800	\$8,404,000	Flood Commission
2	Brahman Dam	\$2,125,000	\$3,625,000	Flood Commission
3	Dona Ana Fire Substation Remodel/Expansion	\$500,000	\$500,000	Fire Administration
4	Chaparral Wastewater Phase 1C	\$920,685	\$3,189,685	Utilities
5	Hill Area Drainage Plan	\$125,000	\$300,000	Flood Commission
6	Placitas Arroyo	\$500,000	\$4,500,000	Flood Commission
7	Anthony Fire Station Remodel	\$800,000	\$800,000	Fire Administration
8	South Central WW Treatment Plant Improvements	\$280,000	\$3,625,000	Utilities
9	South Central WW Collection Improvements	\$175,000	\$1,625,000	Utilities
10	County Fire Stations Exhaust Removal System	\$450,000	\$450,000	Fire Administration
11	Vado WW Project -- Sleepy Farms	\$400,000	\$3,400,000	Utilities
12	Chaparral Substation Renovations	\$600,000	\$600,000	Sheriff
13	Radium Springs Drainage Master Plan	\$100,000	\$100,000	Flood Commission
14	La Union Road	\$130,267	\$130,267	Engineering
15	Organ Roads	\$223,414	\$670,242	Engineering
16	Chaparral Drive	\$350,000	\$350,000	Engineering
17	Butler Heights Road	\$188,065	\$188,065	Engineering
18	Warthen Road	\$550,000	\$550,000	Engineering
19	Butterfield Blvd.	\$50,000	\$670,000	Engineering
20	Flower Road	\$126,625	\$597,625	Engineering
21	Tornillo Flats Drive	\$252,959	\$252,959	Engineering
22	County ADA Improvements	\$100,000	\$100,000	Facilities & Parks
23	Higgins Lane	\$50,000	\$665,000	Engineering
24	Montes Road	\$378,025	\$378,025	Engineering
25	Salome Hernandez Road	\$125,000	\$125,000	Engineering
26	Hasse Road	\$355,254	\$355,254	Engineering
27	Nike Avenue	\$20,000	\$195,000	Engineering
28	Gabaldon Road	\$125,000	\$125,000	Engineering
29	McCombs Road-Hermosa Improvements	\$125,000	\$250,000	Engineering
30	Berino Park Playground Improvements	\$100,000	\$100,000	Facilities & Parks
31	Zeus Avenue	\$15,000	\$165,000	Engineering
32	Security Cameras for Park Facilities	\$87,200	\$87,200	Sheriff
33	Found Avenue	\$14,000	\$134,000	Engineering
34	Mesquite Ballpark Lighting Replacement	\$275,000	\$275,000	Facilities & Parks
35	Dolores Wright Ballpark Lighting Improvements	\$187,000	\$374,000	Facilities & Parks
36	South Valley Complex Renovations	\$100,000	\$100,000	Facilities & Parks
37	Charolais Road	\$117,929	\$117,929	Engineering
38	Betty McKnight Community Center Renovations	\$100,000	\$100,000	Facilities & Parks
39	Desert Aire Drive	\$171,208	\$171,208	Engineering
40	Mustang Road/Bridge at Franco	\$776,693	\$776,693	Engineering
41	Sal Si Puedes Neighborhood Access	\$125,000	\$125,000	Engineering
42	Mesilla View-Chaparral Roads	\$521,905	\$521,905	Engineering
43	La Union Sidewalks Construction	\$120,000	\$120,000	Engineering
		\$14,517,029	\$39,889,057	

This list represents the 43 **projects in Colonias areas**. The projects are listed in prioritized order, however, it is not the complete Dona Ana County ICIP List.

Project Name	Request Amount	Commission District
--------------	----------------	---------------------

2019-2023 ICIP COLONIAS PROJECT SUMMARIES

Project Name	Request Amount	Commission District
--------------	----------------	---------------------

- | | | |
|-----------------------------|-------------------------------|----------|
| 1) Dragonfly Channel | \$1,680,800 Phase I | 4 |
| | \$7,232,000 Phase II-V | |

Scope of Work: To design and construct an outfall channel for the Brahman Dam that will route drainage waters to an area known as Isaacks Lake. Phase I consists of plan and design and construction. Phase II-V Consists of construction.

This project is an outfall channel for the Brahman Dam. The channel will route drainage waters to an area known as Isaacks Lake. This project can be constructed in multi-phases and by multi-year funding. The Brahman Dam and Dragonfly Channel are key elements to the East Mesa Master Drainage Plan. These facilities will be the backbone of future flood control facilities and need to be constructed prior to most other major flood control facilities in the area. Improved drainage in the area will reduce flood complaints from private property owners, reduce road maintenance and improve access for residents and emergency vehicles.

- | | | |
|-----------------------|--------------------------------|----------|
| 2) Brahman Dam | \$2,125,000 Phase I | 4 |
| | \$1,500,000 Phase II-IV | |

Scope of Work: To design and construct a flood control dam that ties into the northern end of an existing channel known as the Dragonfly Channel.

This project is an earthen flood control dam that ties into the northern end of an existing channel known as the Dragonfly Channel. The Brahman Dam and Dragonfly Channel are key elements to the East Mesa Master Drainage Plan and will be the backbone of future flood control facilities. They need to be constructed prior to most other major flood control facilities in the area. Improved drainage in the area will reduce flood complaints from private property owners, reduce road maintenance and improve access for residents and emergency vehicles.

- | | | |
|---|------------------|----------|
| 3) Doña Ana Fire Station Remodel/Expansion | \$500,000 | 5 |
|---|------------------|----------|

Scope of Work: To plan, design and construct renovations to include the addition of dorm rooms, upgrades to living/day rooms and a classroom area at the Doña Ana Fire Station in Doña Ana County.

The project will include renovations to provide for a more efficient fire station to house around-the-clock staff. This will improve response times to the residents of the County, while providing better living space for the firefighters.

- | | | |
|--|--------------------|----------|
| 4) Chaparral Waste Water Project Phase 1C | \$1,221,000 | 2 |
|--|--------------------|----------|

Scope of Work: To Construct Phase 1C of the Chaparral Wastewater Project.

This phase will include approximately 13,000 l.f. of gravity collection line, a duplex lift station, and approximately 4,700 l.f. of force main. Also planned is improvements to lift station #9 and the addition of a mechanical bar screen in the entrance works channel at the Waste

Project Name	Request Amount	Commission District
--------------	----------------	---------------------

Water Treatment Plant. This will provide service approximately 200 residents. Land has been acquired for the lift station.

- 5) **Hill Area Drainage Plan** **\$125,000 (Phase I) Plan and Design** **4**
\$175,000 (Phase II) Construction

Scope of Work: To plan, design and construct stormwater and drainage improvements in the Hill area, north of Doña Ana, New Mexico.

The project will determine the source and amount of localized flooding, design projects to alleviate the flooding and construct the proposed projects. Improved drainage in the area will reduce flood complains from private property owners, reduce road maintenance and improve access for residents and emergency vehicles.

- 6) **Placitas Arroyo** **\$500,000 Phase I (Design)** **5**
\$4,000,000 Phase II (Construction)

Scope of Work: Reconstruction to Canal Road crossing the Placitas Arroyo to improve drainage over the existing concrete culverts along West Canal Road in the Village of Hatch. Project will also consist of widening and improving the critical section from the crossing at HWY 26 to the crossing at HWY 187.

Project reduces risk of flooding from 100 year flood event. Project is essential for protection of entire community (current capacity is 2-5 year storm events) from events similar to the 2006 flood. There is a high level of public interest from other agencies including the Water Trust Board, Army Corps of Engineers and the New Mexico legislature.

The Placitas Arroyo was the major flooding source in the 2006 flooding of the Village of Hatch. The project will provide much needed flood protection to local home owners, business population, as well as infrastructure, and will free up County road crews to clean up in other areas of the county after a storm event.

- 7) **Anthony Fire Station Remodel** **\$ 800,000** **5**

Scope of Work: To design and construct/complete remodel/expansion to include the addition of dorm rooms, upgrades to living/day rooms and pave the parking lot and driving area at the Anthony Fire Station in Doña Ana County.

The project will include renovations to provide for a more efficient fire station to house around-the-clock staff. This will improve response times to the residents of the County, while providing better living space for the firefighters.

- 8) **South Central WW Treatment Plant Improvements** **1,2**
\$1,625,000 Phase I
\$2,000,000 Phase II

Scope of Work: To plan, assess, design and construct Phase 1 and Phase 2 improvements to the County's South Central Wastewater Treatment Plant.

Project Name	Request Amount	Commission District
--------------	----------------	---------------------

Facility requires upgrade activities to repair structural components and increase processing capacity. Project will protect infrastructure and ensure that remaining 10-year design of life of facility is met and potentially extend remaining service life to 15 years. Project will improve efficiency. Project is currently running below capacity (50%). Project will accommodate future flows from Mesquite and Brazito, scheduled for near term. Reduced operation costs estimated at \$40,000.

Project will extend the life of the a major wastewater treatment plant by 10 years, reduce the overall maintenance and operation costs of the system over its expected life and significantly reduce the risk of failure of an essential public utility for Southern Doña Ana County communities.

- 9) **South Central WW Collection Improvements** 1,2
\$ 625,000 Phase I (Design)
\$1,000,000

Scope of Work: To plan, initiate an asset management plan, design and construct improvements and upgrades to the existing collection system in the South Central Region.

Facility originally built in 2004 – expected service life of facility is 10-20 years; waste water system serves largest service area for Doña Ana County. Memorandum of Agreement with Lower Rio Grande Public Water Works Authority– taking flow from Mesquite and Brazito systems. Flow likely not to be supported by systematic assessment but rather by staff (visible) assessment. Project will increase life expectancy by 5-8 years for lift stations; existing wastewater plant is at 30-40% capacity. Project will reduce risk of breakdown of lift stations and failure of manhole covers. Project will reduce operating expense.

Project will extend the life of system lift stations by a maximum of 8-10 years, prevent costly line breaks and failure of manhole infrastructure thus improving the reliability and operation of an essential public utility as its service area expands in Southern Doña Ana County.

- 10) **County Fire Stations Exhaust Removal System** ALL
\$450,000

Scope of Work: To plan, Design, and Install Exhaust Removal Systems throughout the eighteen (18) county fire stations countywide.

Promote a healthy working environment, minimizing the amount of exhaust and diesel fumes that firefighters are exposed to while working at the stations. The currently increasing call volume, or demand for service countywide, has firefighters being exposed to the fumes and diesel exhaust on a more frequent basis.

- 11) **Vado Wastewater Project – Sleepy Farms Design** 1
\$ 400,000

Scope of Work: To plan, design, acquire and construct Wastewater Collection and lift stations for the area of Sleepy Farms, Vado, NM.

Project Name	Request Amount	Commission District
--------------	----------------	---------------------

The residents of Sleepy Farms are experiencing septic, cesspool and leech field failures. This study will determine the ability to connect residents to the County's system.

12) Sheriff's Chaparral Substation Renovations **5**
\$600,000

Scope of Work: To equip, install, plan, design and construct improvements to the Chaparral Sheriff's Substation, including HVAC, parking lot and landscape in Doña Ana County.

This project will include construction of a secure, paved parking area, xeriscape landscaping, lighting upgrades, interior and exterior paint, replace and upgrade windows and upgrade HVAC system.

13) Radium Springs Drainage Master Plan \$ 100,000 **5**

Scope of Work: To develop a Drainage Master Plan for the unincorporated community of Radium Springs in Doña Ana County.

This project will determine the source and amount of localized flooding. The plan will identify capital projects to alleviate the flooding. Improved drainage in the area will reduce flood complaints from private property owners, reduce road maintenance and improve access for residents and emergency vehicles. The capital projects identified in the Drainage Master Plan will provide the much needed flood protection to local home owners, business population, as well as infrastructure, and will free up County road crews to clean up in other areas of the county after a storm event.

14) La Union Avenue **1**
\$130,267

Scope of Work: To design, reconstruct and drainage improvements of a county road in the community of La Union NM.

The project will include the construction of La Union Ave. Items included will be; 6 inches of sub grade preparation, 6 inches of base course, and 2 inches of HMAc as well as header curb. The existing roadway is a dirt road that services many residents along this street. This project will be completed in one phase. Phase I starting on the east end of La Union Ave. approximately 1250 feet to the intersection of Sentenario Street.

15) Organ Roads **4**
\$223,414

Scope of Work: The project includes construction of 2nd Street, 3rd Street and Furnace Street. These Streets combined are approximately 4850 LF in length. Construction items include; 6 inches of sub grade preparation, 6 inches of base course, and 2 inches of HMAc as well as type "C" rollover curb.

The goals and objectives achieved with this project are primarily, providing safe and efficient conveyance of vehicular and pedestrian traffic, while providing separation of both and conveying storm water flows to reduce erosion and flood susceptibility to the adjoining properties and roadway features.

Project Name	Request Amount	Commission District
16) Chaparral Drive	\$ 350,000	2
<p>Scope of Work: To pave Chaparral Drive which will include planning, engineering, construction, final inspection, and one year warranty inspection.</p> <p>Planning: Initial Survey of roadway and public meetings. Engineering: Put the planning to a plan set and sent out to construction. Construction: Pave the unpaved sections of the roadway. Final Inspection: Inspect the final product from the contractor. Warranty inspection: One year after final inspection the County will go back with the contractor and re-inspect the project for any defects.</p>		
17) Butler Heights Road	\$ 188,065	2
<p>Scope of Work: To design and construct a paved road in the community of Chaparral NM and also to aid in drainage improvements.</p> <p>The project will design and construct a paved road in the community of Chaparral NM and also to aid in drainage improvements. Roads will consist of 2" asphalt on 6" base course upgrade.</p>		
18) Warthen Road	\$550,000	1
<p>Scope of Work: To plan, design, acquire rights-of-way and construct County roads.</p> <p>The project will improve Warthen Road and drainage issues by reducing erosion and flood risk.</p>		
19) Butterfield Blvd.	\$50,000 (Phase I) Design \$310,000 (Phase II) Partial Construction \$310,000 (Phase III) Remaining Construction	4
<p>Scope of Work: To plan, design, acquire rights-of-way and construct a road within the Butterfield Park Community in Doña Ana County.</p> <p>The project is aimed to protect area residents susceptible to overland storm water flooding due to existing roadway conditions. The project will provide access and edge of pavement fraying control with inclusion of curb and gutter. Issues to be addressed by this project include providing overland storm water runoff and flooding control, edge of pavement preservation, access control and safer, vertically separated pedestrian access.</p>		
20) Flower Road	\$597,625	1
<p>Scope of Work: To plan, survey, design and construct and drainage improvements on Flower Road in Doña Ana County.</p> <p>The project will construct 2,100 feet of Flower Road from Swanack Road bearing north to the intersection with Calle de la Cruz. Construction items to include 2.5" asphalt pavement, 6" base course, sub-grade shaping and compaction, curb and gutter, and an 18" storm drain improvements. This roadway connects two Colonias Communities, shall eliminate recurring flooding, and shall improve vehicle and pedestrian traffic through the roadway.</p>		
21) Tornillo Flats Drive	\$ 252,959	2

Project Name	Request Amount	Commission District
--------------	----------------	---------------------

Scope of Work: To design and construct a paved road in the community of Chaparral NM and also to aid in drainage improvements

The proposed completion of the project will improve access for residents as well as other commuters who travel on these streets in the Chaparral area. The proposed asphalt surface will provide a safer and more reliable roadway that will improve the quality of life for area residents.

22) ADA Improvements **\$ 100,000** **ALL**

Scope of Work: To Plan, design, construct and make ADA improvements to county owned buildings, parks and grounds

To comply with the State and Federal Americans with Disabilities Act, includes new sidewalks, improving parking, replacing landing surfaces, improving/replacing doors and hardware, replacing signage.

23) Higgins Lane **\$ 50,000 (Phase I) Design/Environmental** **4**
\$307,500 (Phase II) Partial Construction
\$307,500 (Phase III) Remaining Construction

Scope of Work: To plan, design, acquire rights-of-way and construct Higgins Lane in Doña Ana County.

Higgins Lane roadway reconstruction project aimed to protect area residents susceptible to overland storm water flooding due to existing roadway conditions. The project will provide access and edge of pavement fraying control, with inclusion of curb and gutter. Issues to be addressed by this project include providing overland storm water runoff and flooding control, edge of pavement preservation, access control and safer, vertically separated pedestrian access.

24) Montes Road **\$ 378,023** **4**

Scope of Work: To plan, engineer, construct and pave Montes Road/Cover EBID Junctions in Doña Ana County.

The project will improve the current roadway and ditch banks which are very narrow along this section of the road, which will improve safety for drivers and reduce the potential of a ditch bank collapse.

25) Salome Hernandez Road **\$ 125,000** **2**

Scope of Work: To plan, design and pave Salome Hernandez in Doña Ana County.

The project will plan, design and pave Salome Hernandez Road, which is approximately 430 LF in length. Items included will be; 6 inches of sub grade preparation, 8 inches of base course, and 3 inches of HMA.

Project Name	Request Amount	Commission District
26) Haase Road	\$ 355,254	2
<p>Scope of Work: To plan, design and pave Haase Road in Doña Ana County.</p> <p>The project will plan, design and pave Haase Road, which is approximately 3,096 LF in length. Items included will be; 6 inches of sub grade preparation, 6 inches of base course, and 2 inches of HMAAC.</p>		
27) Nike Avenue	\$ 20,000 (Phase I) Design,Environmental,Cultural \$ 175,000 (Phase II) Construction	4
<p>Scope of Work: To plan, design and pave Gabaldon Street in Doña Ana County.</p> <p>Nike Avenue is a reconstruction project aimed to protect area residents susceptible to overland storm water flooding due to existing roadway conditions, while providing access and edge of pavement fraying control with inclusion of curb and gutter. Project activities include; providing overland storm water runoff and flooding control, edge of pavement preservation, access control and safer and vertically separated pedestrian access. The existing roadway will be milled and recycled to construct the pedestrian access way.</p>		
28) Gabaldon Street	\$ 125,000	2
<p>Scope of Work: To plan, design, acquire rights-of-way and construct Nike Avenue in Butterfield in Doña Ana County.</p> <p>To plan, design and pave Gabaldon Street, which is approximately 2,300 LF in length. Items included will be; 6 inches of sub grade preparation, 6 inches of base course, and 1.5 inches of HMAAC.</p>		
29) McCombs Road/Hermosa Improvements	\$125,000	2
<p>Scope of Work: To plan, design and reconstruct the intersection of McCombs Road and Hermosa in Doña Ana County.</p> <p>This project will improve access safety, delineate roadway from adjacent land uses, improve travel and turning movement safety and improve economic development opportunities.</p>		
30) Berino Park Improvements	\$ 100,000	1
<p>Scope of Work: To plan, design and construct improvements to Berino Park in Doña Ana County.</p> <p>The project will upgrade the playground equipment to certain certifications and sustainability. The upgrades to the Berino park will provide adequate usage for the community, current park utilizes and event holders and generate more usage throughout the year to create a safe environment this would applied to sustaining the grounds and</p>		

Project Name	Request Amount	Commission District
--------------	----------------	---------------------

infrastructure at the park. All upgrades will be a long term investment for Dona Ana County parks and its long term operations.

31) Zeus Avenue **\$ 15,000 Design, Environmental, Cultural** **4**
\$150,000 (Phase II) Construction

Scope of Work: To plan, design, acquire rights-of-way and construct Zeus Avenue in Doña Ana County.

The initial project is for design of the Zeus Avenue project is a reconstruction project aimed to protect area residents susceptible to overland storm water flooding due to existing roadway conditions. The project will provide access and edge of pavement fraying control with inclusion of curb and gutter. Issues to be addressed by this project include providing overland storm water runoff and flooding control, edge of pavement preservation, access control and safer, vertically separated pedestrian access.

32) Security Cameras in Park Facilities **\$ 87,200** **3 & 4**

Scope of Work: To plan, purchase and install surveillance camera equipment for additional public safety in parks and facilities in Doña Ana County.

There has been an increase of criminal activity on and near the Dolores Wright Park in Chaparral, NM and the Butterfield Community Center in Organ, NM, to include graffiti and vandalism. The Sheriff's Department believes that cameras and surveillance equipment could decrease the likelihood of such events and aid in the investigation and prosecution of crimes in these areas.

33) Found Avenue **\$ 14,000 (Phase I) Design** **4**
\$ 120,000 (Phase II) Construction

Scope of Work: To plan, design, acquire rights-of-way and construct Found Avenue in Doña Ana County.

The initial phase of this project includes design and environmental clearance for Found Avenue. This reconstruction project is aimed to protect area residents susceptible to overland storm water flooding due to existing roadway conditions, while providing access and edge of pavement fraying control, with inclusion of curb and gutter.

34) Mesquite Ballpark Lighting Replacement **\$ 275,000** **1**

Scope of Work: To plan, design and construct the replacement of the Mesquite Ballpark lighting in Doña Ana County.

The project will upgrade the baseball lighting that has been in place for thirty years. By replacing the existing lighting, energy and maintenance costs will be reduced. There should also be a decrease in risk of harm to the public.

35) Dolores Wright Park Lighting **\$ 374,000** **2**

Project Name	Request Amount	Commission District
--------------	----------------	---------------------

Scope of Work: To plan, design, replace, upgrade, purchase and install the skate park improvements at the Dolores Wright Park in Chaparral in Doña Ana County.

The project will replace and upgrade the current skate park which is 18 years old and outdated. The skate park is heavily used by the community and has become dangerously deteriorated.

36) South Valley Complex Renovations \$ 100,000 1

Scope of Work: To plan, design and construct renovations, upgrades, improvements and repairs to the South Valley Complex in Anthony, NM.

The repairs will eliminate further deterioration, will alleviate major leaks currently taking place and will sustain the life and usage of the building in which will help the general public from injury or harm.

37) Charolais Road \$117,929 4

Scope of Work: To plan, engineer, construction and final inspection of Charolais Road in Doña Ana County.

Proposed project will pave Charolais Road from Bataan Memorial west to Longhorn Drive. Project will reduce the cost required with the constant maintenance of an unpaved road. Reduce fugitive dust in the area. Provide an improvement in the quality of life in the area.

38) Betty McKnight Community Center \$100,000 5

Scope of Work: To plan, design and construct renovations, upgrades, improvements and repairs to the Betty McKnight Community Center.

To plan, design and construct renovations, upgrades, improvements and repairs to the Betty McKnight Community Center. Renovations, upgrades, improvements and repairs will address several issues regarding the aging of the building. Structural damage has occurred over the years, especially the roof. A re-roof is necessary to keep the building from leaking. The leaks have caused damage throughout the building and have caused the ceiling to collapse in some areas posing a hazard and danger for the occupants in the building.

39) Desert Aire Drive \$ 171,208 2

Scope of Work: To survey and plan construction of Desert Aire Drive in Chaparral in Doña Ana County.

This project will begin in Phase I with surveying and planning to construct a paved road in Chaparral. The paved road will reduce costs associated with maintaining a dirt road, reduce dust in the area and improve the quality of life of the residents.

40) Mustang Road/Bridge at Franco \$776,692 1

Scope of Work: To plan, engineer and construct Mustang Road in Vado in Doña Ana County.

Project Name	Request Amount	Commission District
--------------	----------------	---------------------

Proposed project will pave Mustang Road from Franco Road to the Cul de Sac near the end of Mustang Road. Completion of the project will help reduce the cost required with the constant maintenance of an unpaved road. Project will reduce fugitive dust in the area and provide an improvement in the quality of life in the area.

41) Sal Si Puedes Neighborhood Access \$ 125,000 1

Scope of Work: To access survey and corridor study to help aid in planning and designing of a new access to the neighborhood in the community of Vado in Doña Ana County.

The project will provide a corridor study of the area and will allow Doña Ana County to decide on actions that will need to be taken to improve the access to the neighborhood and make it safer and more reliable for the residents.

42) Mesilla View-Chaparral Roads \$521, 905 2

Scope of Work: To plan, engineer, construct and pave Mesilla View Road in Chaparral in Doña Ana County.

This project will pave Mesilla View road from Greenwood to McCombs Road (4,350 linear feet of pavement). Project will reduce the cost required with the constant maintenance of an unpaved road. Project will reduce fugitive dust in the area and thus provide an improvement in the quality of life in the area.

43) La Union Sidewalks Construction \$ 100,000 2

Scope of Work: To design, reconstruction and drainage improvements of a county road in the community of La Union NM.

The project will include the construction of La Union Ave. Items included will be; 6 inches of sub grade preparation, 6 inches of base course, and 2 inches of HMAc as well as header curb. The existing roadway is a dirt road that services many residents along this street. This project will be completed in one phase. Phase I starting on the east end of La Union Ave. approximately 1250 feet to the intersection of Sentenario Street.

APPENDIX B

ROADS & HIGHWAYS OF DOÑA ANA COUNTY

- **ROADS MAP**
- **INVENTORY OF COLONIA ROADS**







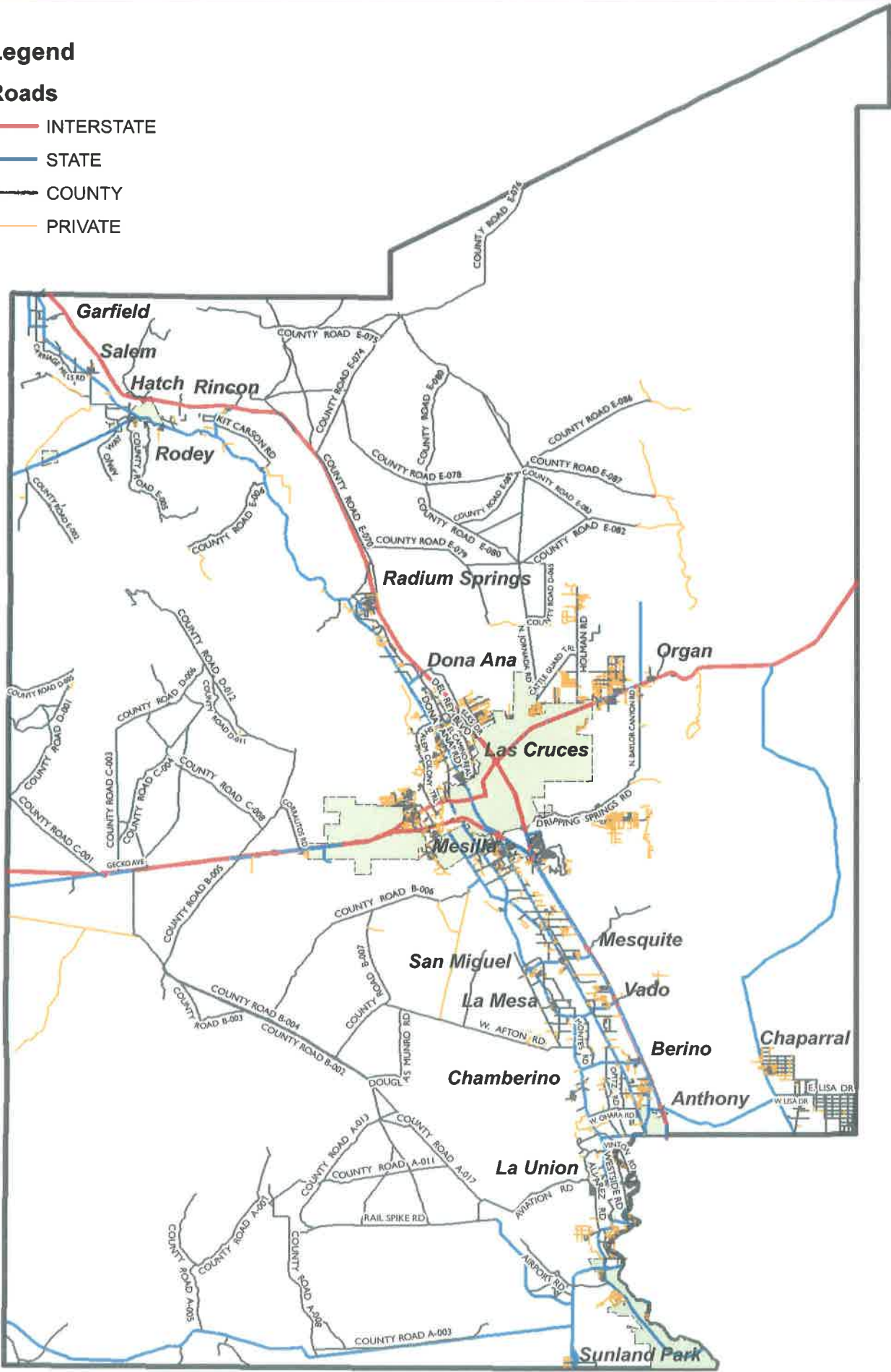
0 1 2 4 8 Miles
9/5/2017

Doña Ana County, NM Roads

Legend

Roads

-  INTERSTATE
-  STATE
-  COUNTY
-  PRIVATE



Colonia Planning Area	Street Name	Maintained by	Surface	Length in Feet				
Berino	AERO LN	COUNTY	PAVED	1311.17	County (lf)		Private (lf)	
	ALEJO LN	COUNTY	PAVED	710.73	32,608.88		21,367.88	
	BLUESTEM DR	COUNTY	PAVED	1423.74	Paved	Unpaved	Paved	Unpaved
	CADENA ST	COUNTY	PAVED	1146.22	30,734.22	1,874.66	0.00	21,367.88
	CALLE AL RUMBO	PRIVATE	UNPAVED	3738.48				
	CAMINO SIN BUELTA	PRIVATE	UNPAVED	1659.44				
	CANDELARIA ST	COUNTY	PAVED	1154.22				
	CANDELARIA ST	PRIVATE	UNPAVED	156.25				
	CONCEPCION AVE	COUNTY	PAVED	2353.56				
	CONCEPCION AVE	PRIVATE	UNPAVED	224.63				
	CONTRERAS ST	COUNTY	PAVED	711.81				
	CORKSCREW ST	COUNTY	PAVED	306.78				
	DROPSEED LN	COUNTY	PAVED	710.75				
	E. SIX MILE RD	PRIVATE	UNPAVED	3070.48				
	FEATHERGRASS LN	COUNTY	PAVED	937.50				
	FUEGO AVE	COUNTY	PAVED	303.83				
	GUILLEN AVE	PRIVATE	UNPAVED	764.23				
	GUILLERMO RD	PRIVATE	UNPAVED	2325.94				
	GUILLERMO RD	COUNTY	PAVED	183.14				
	HARDING RD	COUNTY	PAVED	202.76				
	ISLA VISTA AVE	PRIVATE	UNPAVED	807.20				
	LLUVIA ST	COUNTY	PAVED	996.02				
	McANALLY AVE	COUNTY	PAVED	2576.68				
	MOGOLLON ST	COUNTY	PAVED	306.10				
	OPITZ RD	COUNTY	PAVED	2307.36				
	OTERO ST	COUNTY	UNPAVED	158.55				
	OTERO ST	COUNTY	PAVED	1136.81				
	PARQUE AVE	COUNTY	PAVED	2996.68				
	PICO LN	COUNTY	PAVED	943.98				
	PIPO LN	PRIVATE	UNPAVED	490.53				
	PLUME ST	COUNTY	PAVED	1019.17				
	PRIVADA AVE	PRIVATE	UNPAVED	790.52				
	PULIS RD	PRIVATE	UNPAVED	1483.47				
	RIO LN	COUNTY	PAVED	526.20				
	RISTRA ST	COUNTY	PAVED	1141.37				
	RISTRA ST	PRIVATE	UNPAVED	147.61				
SALTBUSH DR	COUNTY	PAVED	1502.72					
SAN BENITO ST	COUNTY	PAVED	1305.78					
THOMPSON ST	COUNTY	UNPAVED	1550.08					
THOMPSON ST	COUNTY	PAVED	1161.38					
VARGAS ST	COUNTY	UNPAVED	166.02					
VARGAS ST	COUNTY	PAVED	1133.76					
VISTOSO LP	PRIVATE	UNPAVED	5709.11					
W. SIX MILE RD	COUNTY	PAVED	224.04					
Brazito	ANGIE LN	PRIVATE	UNPAVED	702.36	County (lf)		Private (lf)	
	ARCO PL	PRIVATE	UNPAVED	734.07	17,835.95		22,830.86	
	ARTESIA CT	PRIVATE	UNPAVED	607.17	Paved	Unpaved	Paved	Unpaved
	BAR-B-QUE RD	COUNTY	PAVED	1073.39	13,987.47	3,848.48	0.00	22,830.86
	BLUET LN	PRIVATE	UNPAVED	860.05				
	BOSQUE FARMS CT	PRIVATE	UNPAVED	412.13				
	CALLE DE BRAZITO	COUNTY	PAVED	2636.36				
	CALLE DE BRAZITO	PRIVATE	UNPAVED	1296.14				
	CARLSBAD CT	PRIVATE	UNPAVED	502.32				
	CLOVIS RD	PRIVATE	UNPAVED	1911.20				
	EAST SIDE CANAL RD	COUNTY	UNPAVED	542.01				
	ESTRELLITA CT	PRIVATE	UNPAVED	587.03				
	HARPER RD	COUNTY	PAVED	4026.52				
	HOBBS RD	PRIVATE	UNPAVED	937.81				
	MISSIONARY RIDGE RD	COUNTY	UNPAVED	2040.01				
	MISSIONARY RIDGE RD	PRIVATE	UNPAVED	1620.34				
	ONNIES ACRES RD	COUNTY	UNPAVED	89.15				

PECANDEROSA CT	PRIVATE	UNPAVED	294.06
PICNIC CT	PRIVATE	UNPAVED	298.14
PURE WATER RD	PRIVATE	UNPAVED	27.03
RAGING BULL PL	PRIVATE	UNPAVED	986.47
ROSWELL ST	PRIVATE	UNPAVED	1564.78
SATEVO PL	PRIVATE	UNPAVED	368.94
SOCCORO RD	PRIVATE	UNPAVED	443.08
STONE DR	PRIVATE	UNPAVED	1120.68
TEAK LN	PRIVATE	UNPAVED	1856.03
TEAK TIMBER RD	PRIVATE	UNPAVED	609.80
TEAK WOOD RD	PRIVATE	UNPAVED	1150.20
TECTONA RD	PRIVATE	UNPAVED	687.93
VERVAIN RD	PRIVATE	UNPAVED	709.32
YUCCA RD	COUNTY	UNPAVED	1177.32
YUCCA RD	COUNTY	PAVED	6251.21
YUCCA RD	PRIVATE	UNPAVED	1861.06
ZULE PL	PRIVATE	UNPAVED	682.74

Butterfield

ANTONITO RD	PRIVATE	UNPAVED	679.07
BALSAM RD	COUNTY	PAVED	791.04
BALSAM RD	PRIVATE	UNPAVED	28.08
BERRY PATCH LANE	COUNTY	PAVED	3067.82
BERRY PATCH LANE	PRIVATE	UNPAVED	2144.72
BUTTERFIELD BLVD	COUNTY	PAVED	4025.33
BUTTONWILLOW PL	PRIVATE	UNPAVED	24.17
CIRCUIT LN	PRIVATE	UNPAVED	1531.73
DESERT PARK AVE	COUNTY	PAVED	2871.88
EASON LN	COUNTY	PAVED	36.11
EASY LN	COUNTY	UNPAVED	2958.31
EASY LN	PRIVATE	UNPAVED	513.85
FOUND AVE	COUNTY	PAVED	601.47
HIGGINS LN	COUNTY	PAVED	3247.98
HOLSOME RD	COUNTY	PAVED	530.20
ISAACKS AVE	COUNTY	PAVED	2080.51
LARIMER LN	COUNTY	PAVED	2516.32
MISSILE LN	COUNTY	UNPAVED	1233.15
NIKE AVE	COUNTY	PAVED	904.96
PAETZ LN	COUNTY	UNPAVED	1090.49
WILDFLOWER ST	COUNTY	PAVED	1889.81
ZEUS AVE	COUNTY	PAVED	752.78

County (lf)		Private (lf)	
28,598.17		4,921.62	
Paved	Unpaved	Paved	Unpaved
23,316.22	5,281.95	0.00	4,921.62

Cattleland

ABERDEEN ANGUS WAY	COUNTY	UNPAVED	1358.44
ANTARES ST	PRIVATE	UNPAVED	1073.57
CHALLENGER PL	PRIVATE	UNPAVED	2836.77
CHAROLAIS DR	COUNTY	UNPAVED	1058.95
COMET ST	PRIVATE	UNPAVED	1100.65
LONGHORN DR	COUNTY	PAVED	3668.28
MOONGATE RD	COUNTY	PAVED	3184.83
ORION ST	PRIVATE	UNPAVED	1095.27
PLUTO ST	PRIVATE	UNPAVED	1136.72
POLARIS ST	PRIVATE	UNPAVED	1093.24
RIGEL ST	PRIVATE	UNPAVED	1115.87
SANTA GERTRUDIS DR	COUNTY	UNPAVED	1647.28
SHORTHORN DR	COUNTY	UNPAVED	1958.13
SIRIUS ST	PRIVATE	UNPAVED	804.24

County (lf)		Private (lf)	
12,875.92		10,256.33	
Paved	Unpaved	Paved	Unpaved
6,853.12	6,022.80	0.00	10,256.33

Chamberino

CALLE BAMBU	PRIVATE	UNPAVED	410.49
CEMETARY ST	COUNTY	PAVED	354.52
CONVENT ST	COUNTY	PAVED	1007.62
E. PROVENCIO RD	COUNTY	PAVED	1122.04
KILJ RD	PRIVATE	UNPAVED	744.85
LARA RD	COUNTY	PAVED	1248.29
MONTE ALTO ST	COUNTY	PAVED	1058.75

County (lf)		Private (lf)	
29,565.27		3,510.83	
Paved	Unpaved	Paved	Unpaved
24,741.39	4,823.88	0.00	3,510.83

N. LOPEZ RD	COUNTY	PAVED	334.59
N. MEDINA RD	COUNTY	PAVED	790.90
N. SAN LUIS AVE	COUNTY	PAVED	715.53
N. SAUCEDO AVE	COUNTY	PAVED	558.89
PADRE PIO AVE	COUNTY	PAVED	772.41
S. LOPEZ RD	COUNTY	UNPAVED	1202.75
S. LOPEZ RD	COUNTY	PAVED	1706.55
S. MEDINA RD	COUNTY	PAVED	2054.54
S. PEREA RD	COUNTY	UNPAVED	524.30
S. PEREA RD	COUNTY	PAVED	1492.01
S. PEREA RD	PRIVATE	UNPAVED	287.99
S. SAN LUIS AVE	COUNTY	PAVED	1691.79
S. SAN LUIS AVE	PRIVATE	UNPAVED	164.03
S. SAUCEDO AVE	COUNTY	PAVED	729.31
SAN BERNARDO ST	COUNTY	PAVED	1014.27
SAN FARA AVE	COUNTY	PAVED	311.22
SAN FRANCISCO DE ASIS ST	COUNTY	PAVED	3154.13
SAN GABRIEL RD	PRIVATE	UNPAVED	983.24
SAN JACINTO RD	COUNTY	PAVED	4115.88
SAN JOAQUIN ST	COUNTY	PAVED	336.31
TEQUILA LN	COUNTY	UNPAVED	910.89
THREE D FARM RD	PRIVATE	UNPAVED	920.23
VIA IGLESIA	COUNTY	PAVED	231.85
W. PROVENCIO RD	COUNTY	UNPAVED	2185.94

Chaparral

ADRIAN RD	PRIVATE	UNPAVED	1322.59
ALEXANDER LN	COUNTY	PAVED	1319.46
ALTA VISTA DR	PRIVATE	UNPAVED	4628.47
ALTOS DR	COUNTY	UNPAVED	1822.29
AMPARO RD	COUNTY	UNPAVED	5477.65
AMPARO RD	COUNTY	PAVED	7877.04
AMPARO RD	PRIVATE	PAVED	680.91
ANGIES DREAM LN	COUNTY	UNPAVED	763.98
ATLAS ST	PRIVATE	UNPAVED	4112.30
AUTUMN SAGE LN	COUNTY	UNPAVED	4170.96
BALD EAGLE CT	COUNTY	PAVED	480.69
BARBIE LN	COUNTY	UNPAVED	3601.91
BRISTLE GRASS DR	COUNTY	UNPAVED	431.27
BUENOS DIAS CT	PRIVATE	UNPAVED	1135.06
BUSHI CT	PRIVATE	UNPAVED	398.88
BUTLER HEIGHTS RD	COUNTY	UNPAVED	2624.99
BYRUM RD	COUNTY	UNPAVED	10519.98
CAP ROCK CT	PRIVATE	UNPAVED	526.75
CAPITAL DR	PRIVATE	UNPAVED	1947.97
CAROL LN	COUNTY	PAVED	1118.71
CATCLAW PL	PRIVATE	PAVED	475.27
CENTERLINE DR	COUNTY	UNPAVED	2630.32
CHAPARRAL DR	COUNTY	UNPAVED	7889.46
CLOUDVIEW RD	COUNTY	PAVED	990.92
COLES RD	COUNTY	UNPAVED	6587.76
COLES RD	COUNTY	PAVED	1291.24
COUNTY LINE DR	COUNTY	PAVED	16593.03
COUNTY ROAD A-074	COUNTY	UNPAVED	8272.63
CYNTHIA LN	COUNTY	UNPAVED	1332.87
DE LARA ESTATES RD	COUNTY	UNPAVED	8262.69
DE LARA ESTATES RD	COUNTY	PAVED	5366.97
DEER GRASS LN	COUNTY	UNPAVED	1453.93
DENALI DR	COUNTY	UNPAVED	2181.13
DESERT AIRE DR	COUNTY	UNPAVED	5246.08
DESERT AIRE DR	COUNTY	PAVED	4303.79
DREAM WALKER WAY	PRIVATE	UNPAVED	629.20
E. LISA DR	COUNTY	PAVED	15820.44
E. WICKER RD	COUNTY	UNPAVED	2614.06

County (If)		Private (If)	
418,052.14		73,209.44	
Paved	Unpaved	Paved	Unpaved
231,843.72	186,208.42	2,823.69	70,385.75

EDNA DR	COUNTY	PAVED	5263.69
EL CAPITAN DR	PRIVATE	UNPAVED	1798.95
ENCHANTMENT DR	PRIVATE	UNPAVED	2555.29
FINLEY ST	COUNTY	UNPAVED	5285.53
FINLEY ST	COUNTY	PAVED	2649.80
GALA WAY	PRIVATE	PAVED	675.39
GLORIETA DR	PRIVATE	UNPAVED	1436.90
GOLDEN EAGLE ST	COUNTY	PAVED	5267.00
GOLDEN SUN DR	COUNTY	UNPAVED	2515.73
GRAMMA GRASS LN	COUNTY	UNPAVED	837.46
GREEN RIVER LP	PRIVATE	UNPAVED	2714.02
GREEN TREE LP	PRIVATE	UNPAVED	3799.99
GREENWOOD RD	COUNTY	UNPAVED	3887.10
GREENWOOD RD	PRIVATE	UNPAVED	1367.19
HACKBERRY CT	PRIVATE	PAVED	554.48
HALF DOME ROAD	PRIVATE	UNPAVED	818.99
HENDRICH RD	COUNTY	UNPAVED	2622.85
HERMOSA DR	COUNTY	PAVED	10532.51
HIDALGO PL	PRIVATE	UNPAVED	367.65
HOPÍ ST	PRIVATE	UNPAVED	3970.92
HOT PEPPERS RD	COUNTY	UNPAVED	6561.72
HOT PEPPERS RD	COUNTY	PAVED	3928.81
HUECO ST	PRIVATE	UNPAVED	5233.76
INDIGO LN	COUNTY	UNPAVED	1259.65
IRON HORSE AVE	PRIVATE	UNPAVED	1780.32
JAVELINA ST	COUNTY	UNPAVED	5237.79
JEANNE LN	COUNTY	UNPAVED	1004.37
KATYDID LN	COUNTY	UNPAVED	1072.23
LISA CT	PRIVATE	UNPAVED	465.61
LORRAINE LN	COUNTY	UNPAVED	1830.10
LUMINOUS LN	COUNTY	PAVED	792.11
LUNA AZUL RD	COUNTY	UNPAVED	3304.54
LUNA AZUL RD	COUNTY	PAVED	9909.95
MAGUEY ST	COUNTY	UNPAVED	567.19
McCOMBS RD	COUNTY	PAVED	13373.89
McLAIN RD	COUNTY	UNPAVED	2621.76
MESILLA VIEW DR	COUNTY	UNPAVED	4291.79
MESILLA VIEW DR	COUNTY	PAVED	9908.47
MIAMI DR	PRIVATE	UNPAVED	1785.12
MISSILE DR	PRIVATE	UNPAVED	5416.77
MOONVIEW LN	COUNTY	PAVED	2317.00
NIKE AIR RD	COUNTY	UNPAVED	1319.42
OASIS DR	COUNTY	UNPAVED	4006.60
OASIS DR	COUNTY	PAVED	5908.96
OLD LAREDO RD	COUNTY	PAVED	3584.12
OLD SEQUOIA RD	COUNTY	UNPAVED	3939.12
OLD SEQUOIA RD	PRIVATE	UNPAVED	114.01
PALMAS ST	COUNTY	UNPAVED	5239.04
PALOMA BLANCA DR	COUNTY	UNPAVED	1009.12
PALOMA BLANCA DR	COUNTY	PAVED	13193.76
PAMPAS GRASS LN	COUNTY	UNPAVED	761.79
PASEO REAL DR	COUNTY	UNPAVED	633.56
PASEO REAL DR	COUNTY	PAVED	9921.82
PASEO REAL DR	PRIVATE	UNPAVED	2128.42
PINOS ALTOS ST	PRIVATE	UNPAVED	1127.91
PRESCOTT ANTHONY DR	COUNTY	UNPAVED	7910.77
PRESCOTT ANTHONY DR	COUNTY	PAVED	4989.68
QUIET PINE DR	COUNTY	UNPAVED	1309.13
QUITMAN RD	COUNTY	UNPAVED	10806.45
RED RIVER DR	COUNTY	PAVED	2586.77
RED RIVER DR	PRIVATE	UNPAVED	501.40
RED SUN DR	COUNTY	PAVED	627.57
REDSTONE ST	COUNTY	UNPAVED	3512.07

REGALA WAY	COUNTY	PAVED	2627.01
RICEGRASS DR	PRIVATE	UNPAVED	1339.50
RIM ROCK DR	PRIVATE	UNPAVED	1713.71
ROCKY MOUNTAIN RD	COUNTY	PAVED	2592.82
ROSE LN	PRIVATE	UNPAVED	1478.01
RUBY CT	PRIVATE	UNPAVED	381.96
RUBY RD	COUNTY	PAVED	3549.67
SAGEWOOD DR	COUNTY	PAVED	5273.47
SALSA ST	COUNTY	UNPAVED	6613.12
SALSA ST	PRIVATE	UNPAVED	1283.57
SAN CARLOS ST	COUNTY	UNPAVED	5835.75
SAN CARLOS ST	COUNTY	PAVED	5274.88
SAND DUNES WAY	COUNTY	PAVED	2395.30
SANDS DR	COUNTY	PAVED	3003.98
SANDS DR	PRIVATE	UNPAVED	803.32
SCHNEBERGER RD	COUNTY	UNPAVED	1514.76
SCHNEBERGER RD	COUNTY	PAVED	1286.92
SHAMROCK CT	PRIVATE	PAVED	437.64
SHIPROCK RD	COUNTY	PAVED	6592.86
SHIRLEY LN	COUNTY	UNPAVED	3886.79
STATE LINE DR	COUNTY	PAVED	9833.44
SUNNY SANDS RD	COUNTY	PAVED	5269.12
TOMAHAWK CT	PRIVATE	UNPAVED	409.45
TORNILLO FLATS DR	COUNTY	UNPAVED	6778.55
TORREON CT	PRIVATE	UNPAVED	939.04
TUMBLEWEED CT	PRIVATE	UNPAVED	539.30
TUMBLEWEED TRL	COUNTY	PAVED	5607.36
TUNA ST	COUNTY	UNPAVED	866.69
UNNAMED RD	PRIVATE	UNPAVED	3957.71
W. LISA DR	COUNTY	PAVED	11378.02
W. WICKER RD	COUNTY	PAVED	5311.27
W. WICKER RD	PRIVATE	UNPAVED	4689.27
WAGON MOUND RD	COUNTY	UNPAVED	1481.90
WAGON TRAIL RD	COUNTY	PAVED	1929.39
WHEATSTONE DR	PRIVATE	UNPAVED	766.48

City of Anthony

BIGHORN ST	PRIVATE	UNPAVED	27.29
E. OHARA RD	COUNTY	PAVED	3884.36
GAZELLE CT	PRIVATE	UNPAVED	22.03
LIPPS RD	PRIVATE	UNPAVED	20.35
MATHIS RD	COUNTY	PAVED	200.60
MIL ACRES ST	PRIVATE	UNPAVED	1519.48
VENADITO TRL	PRIVATE	UNPAVED	15.21
W. OHARA RD	COUNTY	PAVED	486.92
WHISPERING DOVE AVE	COUNTY	PAVED	245.23

County (If)		Private (If)	
4,817.12		1,604.35	
Paved	Unpaved	Paved	Unpaved
4,817.12	0.00	0.00	1,604.35

City of Sunland Park

BORDERLAND RD	COUNTY	PAVED	1167.69
CASAS LINDAS LN	COUNTY	PAVED	70.37
COMMERCIANTES BLVD	PRIVATE	PAVED	2598.41
COUNTRY CLUB RD	PRIVATE	PAVED	57.60
EDGEMONT RD	COUNTY	PAVED	77.15
KILLDEER RD	COUNTY	PAVED	64.87

County (If)		Private (If)	
1,380.09		2,656.01	
Paved	Unpaved	Paved	Unpaved
1,380.09	0.00	2,656.01	0.00

Del Cerro

ARMERIA LN	PRIVATE	UNPAVED	353.48
CALLE DE LA CRUZ	COUNTY	PAVED	1539.49
CRISTO AVE	COUNTY	PAVED	1945.69
FERN CT	PRIVATE	UNPAVED	427.24
FLOWER RD	PRIVATE	UNPAVED	2130.00
LA FE AVE	COUNTY	PAVED	2825.87
LILY WAY	PRIVATE	UNPAVED	693.46
LIRIO LN	PRIVATE	UNPAVED	437.16
LOMAS AVE	COUNTY	PAVED	2308.06
MORO LN	PRIVATE	UNPAVED	712.68

County (If)		Private (If)	
17,646.13		9,485.70	
Paved	Unpaved	Paved	Unpaved
17,646.13	0.00	0.00	9,485.70

OJITO AVE	COUNTY	PAVED	740.90
ORCHID WAY	PRIVATE	UNPAVED	649.95
PALMILLA AVE	COUNTY	PAVED	1921.82
PAZ GARCIA CT	PRIVATE	UNPAVED	340.61
PLAZA AVE	COUNTY	PAVED	1149.18
POPPY CT	PRIVATE	UNPAVED	319.23
SANTOLINA LN	PRIVATE	UNPAVED	342.81
SINGH RD	PRIVATE	UNPAVED	2036.26
SWANNACK RD	COUNTY	PAVED	5215.11
THORN WAY	PRIVATE	UNPAVED	342.14
WILD ROSE WAY	PRIVATE	UNPAVED	700.67

Dona Ana

ABEYTA RD	COUNTY	PAVED	2487.92
ABEYTA RD	COUNTY	UNPAVED	802.54
ALGODON CT	PRIVATE	UNPAVED	273.68
ARMADILLO LN	PRIVATE	UNPAVED	17.79
BARELA DR	COUNTY	PAVED	3181.86
CONROY TRL	PRIVATE	UNPAVED	250.18
COUNTY ROAD D-108	COUNTY	PAVED	957.09
CRISTO REY ST	COUNTY	PAVED	582.88
CRISTO REY ST	PRIVATE	UNPAVED	285.17
DE LA O DR	COUNTY	UNPAVED	462.19
DE LA O DR	COUNTY	PAVED	838.06
DUSTY LN	COUNTY	PAVED	1508.61
E. DONA ANA SCHOOL RD	COUNTY	PAVED	1230.53
EL CAMINO REAL	COUNTY	PAVED	3018.35
EL TORITO LN	COUNTY	PAVED	456.62
ELKS DR	COUNTY	PAVED	1189.98
FLORES CT	PRIVATE	UNPAVED	624.41
GARCIA DR	COUNTY	PAVED	3238.29
GARY LEE LN	PRIVATE	UNPAVED	377.50
ISAAC GARCIA RD	COUNTY	PAVED	1004.72
JOE GUTIERREZ ST	COUNTY	PAVED	2528.79
JOE GUTIERREZ ST	PRIVATE	UNPAVED	93.69
LEDESMA DR	COUNTY	PAVED	4241.55
MISTY WAY	PRIVATE	UNPAVED	13.00
PEDRO MADRID RD	COUNTY	PAVED	2070.89
ROMERO DR	COUNTY	PAVED	1843.19
TANAHILL DR	COUNTY	PAVED	822.05
UNNAMED RD	COUNTY	PAVED	3.47
VANEGAS CT	COUNTY	PAVED	778.31
VANEGAS DR	COUNTY	PAVED	3047.82
W. DONA ANA SCHOOL RD	COUNTY	PAVED	118.24
WERTHIEM AVE	COUNTY	PAVED	898.41

County (lf)		Private (lf)	
37,312.36		1,935.42	
Paved	Unpaved	Paved	Unpaved
36,047.64	1,264.73	0.00	1,935.42

El Milagro

CHONTE AVE	COUNTY	PAVED	2881.80
RECUERDOS RD	COUNTY	UNPAVED	1532.08
RECUERDOS RD	COUNTY	PAVED	504.28
RUSBAYO ST	PRIVATE	UNPAVED	640.63
TEPACHE ST	COUNTY	PAVED	1095.77
TREBOL AVE	PRIVATE	UNPAVED	846.28

County (lf)		Private (lf)	
6,013.94		1,486.91	
Paved	Unpaved	Paved	Unpaved
4,481.86	1,532.08	0.00	1,486.91

Fairacres

ALOE VERA LN	PRIVATE	PAVED	404.74
CLARK LN	COUNTY	PAVED	1890.79
CLARK LN	PRIVATE	UNPAVED	2355.58
CLIFF LN	COUNTY	PAVED	648.89
CLIFF LN	PRIVATE	UNPAVED	260.42
CYPRESS HILL	PRIVATE	UNPAVED	644.56
DERBY AVE	COUNTY	PAVED	2643.46
DESERT VALLEY CT	PRIVATE	PAVED	331.53
DRY CANYON RD	PRIVATE	PAVED	698.00
DUSTY PRINTS RD	PRIVATE	PAVED	2457.66
DUSTY PRINTS RD	PRIVATE	UNPAVED	1545.76

County (lf)		Private (lf)	
32,000.99		21,610.28	
Paved	Unpaved	Paved	Unpaved
31,038.67	962.32	8,777.54	12,832.74

FOSTER LN	COUNTY	PAVED	646.72
FREESE LN	COUNTY	PAVED	487.81
HILLCREST AVE	COUNTY	PAVED	661.96
HILLCREST AVE	PRIVATE	UNPAVED	1331.84
HILLTOP AVE	COUNTY	PAVED	668.40
LA QUINTA ST	COUNTY	PAVED	76.07
LARK SPUR CT	PRIVATE	PAVED	254.22
LARK SPUR WAY	PRIVATE	PAVED	2221.65
LINDA VISTA RD	COUNTY	PAVED	1333.21
LONESOME RD	COUNTY	UNPAVED	962.32
LOOKOUT VIEW PL	PRIVATE	PAVED	293.86
LOYA LN	COUNTY	PAVED	1087.12
MARWOOD LN	PRIVATE	UNPAVED	443.83
MILLER RD	COUNTY	PAVED	649.97
MILLER RD	PRIVATE	UNPAVED	1219.69
MORTON LN	COUNTY	PAVED	4079.91
MOTOR LN	PRIVATE	UNPAVED	291.73
QUESENBERRY LN	COUNTY	PAVED	4020.17
QUESENBERRY LN	PRIVATE	UNPAVED	1151.28
RAINBOW RIDGE ST	COUNTY	PAVED	1985.80
RED WOLF LN	PRIVATE	UNPAVED	1375.98
RUBY HILLS CT	PRIVATE	UNPAVED	263.73
S. WEINREICH RD	COUNTY	PAVED	3032.34
SANDY HILL DR	COUNTY	PAVED	1964.87
SHAKESPEARE LN	PRIVATE	UNPAVED	939.78
SPIRIT RIDGE CT	COUNTY	PAVED	876.82
SUNFISH CT	PRIVATE	UNPAVED	38.11
SUNSET VIEW PL	PRIVATE	PAVED	204.22
SUPREME CT	PRIVATE	UNPAVED	970.46
TINGO CIR	PRIVATE	PAVED	1911.67
TOWNVIEW LN	COUNTY	PAVED	745.89
VISTA REAL DR	COUNTY	PAVED	1321.95
WEINREICH RD	COUNTY	PAVED	2216.52

Fort Selden

BLAZING TRAILS RD	PRIVATE	UNPAVED	1984.54
BUFFALO ESTATES RD	COUNTY	PAVED	2719.60
CAMP CODY TRL	COUNTY	PAVED	504.95
CARR LN	PRIVATE	UNPAVED	1368.43
CAVALRY TRL	PRIVATE	UNPAVED	757.67
DANIEL CT	PRIVATE	UNPAVED	698.38
DANIEL CT	COUNTY	PAVED	493.80
DE BEERS DR	COUNTY	PAVED	4063.06
DESERT EDGE RD	COUNTY	PAVED	4007.03
DONA ANA RD	COUNTY	PAVED	923.54
FORT CUMMINGS RD	COUNTY	PAVED	2527.23
FORT FURLONG TRL	COUNTY	PAVED	724.64
FORT MARCY TRL	COUNTY	PAVED	1242.04
FORT MCLANE RD	COUNTY	PAVED	3084.65
FORT McRAE RD	COUNTY	PAVED	1898.88
FORT THORN RD	COUNTY	PAVED	963.79
FRODO PL	COUNTY	UNPAVED	4223.21
HURT RD	COUNTY	UNPAVED	3685.63
INDIAN TRAILS RD	PRIVATE	UNPAVED	2814.43
KALVIN PL	COUNTY	PAVED	427.85
L. B. LINDBECK RD	COUNTY	PAVED	2526.61
LEASBURG DAM RD	COUNTY	PAVED	2370.43
MEADOR DR	COUNTY	UNPAVED	4615.86
NACHAS PL	PRIVATE	PAVED	401.94
OUTPOST LN	PRIVATE	UNPAVED	803.63
ROBLEDO VISTA RD	COUNTY	PAVED	5245.30
SCOUT LN	COUNTY	PAVED	581.03
SHARRON Q. LN	PRIVATE	UNPAVED	1564.71
SOLDIER CT	COUNTY	PAVED	440.67

County (lf)		Private (lf)	
52,622.72		13,010.80	
Paved	Unpaved	Paved	Unpaved
35,376.25	17,246.47	1,153.66	11,857.14

	SOUTH TRACK TRL	COUNTY	UNPAVED	2900.49					
	SUNRISE VISTA RD	PRIVATE	UNPAVED	326.02					
	TEL HIGH RD	COUNTY	UNPAVED	1821.29					
	TRES AMIGOS RD	PRIVATE	PAVED	751.71					
	TRES AMIGOS RD	PRIVATE	UNPAVED	1539.33					
	WARRIOR LN	COUNTY	PAVED	631.14					
Garfield									
	DANDELION AVE	COUNTY	UNPAVED	1233.31		County (lf)		Private (lf)	
	LOMA PARDA RD	COUNTY	PAVED	1274.25		8,128.70		0.00	
	NIGHTWATCHERS RD	COUNTY	PAVED	1706.87		Paved	Unpaved	Paved	Unpaved
	RIO VIEJO RD	COUNTY	PAVED	3914.28		6,895.40	1,233.31	0.00	0.00
Hill									
	DONA ANA RD	COUNTY	PAVED	4428.92		County (lf)		Private (lf)	
	GOAT HILL RD	COUNTY	PAVED	643.80		5,072.72		0.00	
						Paved	Unpaved	Paved	Unpaved
						5,072.72	0.00	0.00	0.00
Joy Drive									
	ALDAZ RD	COUNTY	PAVED	1943.14		County (lf)		Private (lf)	
	BURLESON RD	PRIVATE	PAVED	1252.65		17,390.08		9,270.64	
	DREAMS DR	PRIVATE	UNPAVED	2786.69		Paved	Unpaved	Paved	Unpaved
	ELFEGO RD	PRIVATE	UNPAVED	457.45		17,390.08	0.00	1,252.65	8,018.00
	OPITZ RD	COUNTY	PAVED	7609.01					
	OUR WAY RD	PRIVATE	UNPAVED	1808.22					
	PAR TWO LN	PRIVATE	UNPAVED	1599.46					
	QUARTERHORSE RD	PRIVATE	UNPAVED	1366.18					
	W. JOY DR	COUNTY	PAVED	4684.63					
	W. OHARA RD	COUNTY	PAVED	3153.30					
La Mesa									
	ARCHER FARM RD	COUNTY	PAVED	6246.80		County (lf)		Private (lf)	
	BUTTERCUP LN	COUNTY	UNPAVED	1260.82		72,120.68		3,439.06	
	CALLE DE TONANTZIN	PRIVATE	UNPAVED	765.98		Paved	Unpaved	Paved	Unpaved
	CASTILLO RD	COUNTY	PAVED	74.51		52,539.38	19,581.30	0.00	3,439.06
	CHIMURI ST	COUNTY	PAVED	1187.29					
	COUNTY ROAD B-010	COUNTY	UNPAVED	11335.10					
	DAWKINS RD	PRIVATE	UNPAVED	25.36					
	E. BELLMAN AVE	COUNTY	PAVED	1191.86					
	E. CHOPE'S ST	COUNTY	PAVED	1193.01					
	E. CORPENING AVE	COUNTY	PAVED	1188.01					
	E. JOSEPHINE ST	COUNTY	PAVED	1183.79					
	E. SAN MIGUEL ST	COUNTY	PAVED	1183.23					
	E. SAN MIGUEL ST	PRIVATE	UNPAVED	338.34					
	ESSLINGER RD	COUNTY	UNPAVED	3777.81					
	ESSLINGER RD	COUNTY	PAVED	4256.75					
	EVARO DR	PRIVATE	UNPAVED	245.35					
	FLORIDA AVE	COUNTY	PAVED	1190.60					
	FLORIDA AVE	PRIVATE	UNPAVED	338.62					
	GAVILAN AVE	COUNTY	PAVED	3485.72					
	HARLACKER RD	COUNTY	PAVED	164.38					
	J.W. WOODWARD ST	COUNTY	UNPAVED	25.67					
	LISTER AVE	COUNTY	UNPAVED	2879.98					
	LISTER AVE	COUNTY	PAVED	2927.47					
	MONTES RD	COUNTY	PAVED	20.13					
	N. ROSARIO ST	COUNTY	PAVED	781.78					
	PRINCIPAL ST	COUNTY	PAVED	2375.07					
	RANCHITOS LINDOS CT	COUNTY	PAVED	552.13					
	RANCHO LA MESA CT	PRIVATE	UNPAVED	469.64					
	RANCHO LA MESA DR	COUNTY	PAVED	2056.56					
	S. ROSARIO ST	COUNTY	PAVED	1256.69					
	SAINT VALENTINE ST	COUNTY	PAVED	1971.96					
	SAN JOSE RD	COUNTY	PAVED	11418.98					
	VICTORIA ST	COUNTY	PAVED	1271.51					
	W. BELLMAN AVE	COUNTY	UNPAVED	301.93					
	W. BELLMAN AVE	COUNTY	PAVED	402.17					

W. CHOPE'S ST	COUNTY	PAVED	400.63
W. CHOPE'S ST	PRIVATE	UNPAVED	798.11
W. CORPENING AVE	COUNTY	PAVED	614.70
W. JOSEPHINE ST	PRIVATE	UNPAVED	402.48
W. SAN MIGUEL ST	COUNTY	PAVED	3943.65
W. SAN MIGUEL ST	PRIVATE	UNPAVED	55.17

La Union

ALVAREZ RD	COUNTY	PAVED	7793.64
AVIATION RD	COUNTY	UNPAVED	541.77
CALLE DELPHIA	COUNTY	PAVED	1888.47
CALLE PEQUENA	COUNTY	PAVED	825.76
CAMPOSANTO AVE	COUNTY	UNPAVED	532.06
CAMPOSANTO AVE	COUNTY	PAVED	387.14
CONEJO ST	COUNTY	PAVED	1429.83
E. AGUILA AVE	PRIVATE	PAVED	2109.20
EL CHAVO LN	PRIVATE	UNPAVED	314.24
GABALDON RD	COUNTY	UNPAVED	1020.41
GOLONDRINA ST	COUNTY	PAVED	1143.77
KRIEGEL RD	COUNTY	UNPAVED	3822.06
LA UNION AVE	COUNTY	UNPAVED	1231.56
LA UNION AVE	COUNTY	PAVED	1045.19
MALDONADO RD	PRIVATE	UNPAVED	753.52
MENDEZ ST	COUNTY	UNPAVED	735.21
PALOMA ST	COUNTY	UNPAVED	646.87
PALOMA ST	COUNTY	PAVED	800.91
ROSALES ST	COUNTY	PAVED	815.03
SALOME HERNANDEZ ST	COUNTY	PAVED	1854.70
SAN ANTONIO ST	COUNTY	PAVED	1577.58
SENTENARIO ST	COUNTY	PAVED	2701.96
SHORT ST	COUNTY	PAVED	488.28
SOUTH AVE	COUNTY	PAVED	2120.27
TELLES ST	COUNTY	PAVED	1992.47
VALLE CALMADO ST	COUNTY	PAVED	763.07
VALLE PLANO RD	COUNTY	PAVED	799.30
VISNAGA ST	COUNTY	PAVED	3960.22
W. AGUILA AVE	COUNTY	PAVED	687.94

County (lf)		Private (lf)	
41,605.48		3,176.96	
Paved	Unpaved	Paved	Unpaved
33,075.55	8,529.94	2,109.20	1,067.77

Las Palmeras

JAMAICA LN	COUNTY	PAVED	762.97
LAS PALMERAS RD	COUNTY	PAVED	981.60
LAS PALMERAS RD	PRIVATE	PAVED	1281.28
LOS COCOS LN	COUNTY	PAVED	1430.93
PALM TREE RD	PRIVATE	PAVED	771.65

County (lf)		Private (lf)	
3,175.50		2,052.93	
Paved	Unpaved	Paved	Unpaved
3,175.50	0.00	2,052.93	0.00

Leasburg

BACA RD	PRIVATE	UNPAVED	2807.08
BEAR CLAW LN	PRIVATE	UNPAVED	500.13
CACTUS PATCH WAY	PRIVATE	UNPAVED	1966.44
CORRALONES RD	PRIVATE	UNPAVED	2018.70
CRITTER LN	PRIVATE	UNPAVED	482.27
DONA ANA RD	COUNTY	PAVED	16939.77
EAGLE WINGS RD	PRIVATE	UNPAVED	2402.98
EMBARCADERO RD	COUNTY	PAVED	2447.95
FOSSIL VIEW RD	COUNTY	UNPAVED	3356.58
FRANCIS WAY	PRIVATE	UNPAVED	836.33
HAYRIDE RD	COUNTY	PAVED	4837.83
HORNER RD	PRIVATE	UNPAVED	1969.67
IRONSHOE RD	PRIVATE	UNPAVED	2036.47
LATIGO LN	PRIVATE	UNPAVED	1510.50
MULE CREEK STREET	PRIVATE	PAVED	498.82
OLD MILL RD	PRIVATE	UNPAVED	1595.05
SLEEPY HOLLOW WAY	COUNTY	PAVED	430.96
SUNKEN TRAIN PL	PRIVATE	UNPAVED	893.74
WILLIAM BONNEY RD	PRIVATE	UNPAVED	1054.26
WINDFLYER LN	COUNTY	UNPAVED	1553.67

County (lf)		Private (lf)	
29,566.75		20,572.44	
Paved	Unpaved	Paved	Unpaved
24,656.50	4,910.25	498.82	20,073.62

Mesquite				
ACEITUNAS LN	PRIVATE	PAVED		1942.44
BRADBURY AVE	COUNTY	PAVED		371.25
BRENNA RD	PRIVATE	UNPAVED		464.88
BRYANT ST	COUNTY	PAVED		820.92
COUNTY ROAD B-059	COUNTY	PAVED		283.22
EAST PLAZA DR	PRIVATE	PAVED		1609.25
EAST SIDE CANAL RD	COUNTY	UNPAVED		5351.66
EDWARD AVE	COUNTY	PAVED		351.38
EMERSON AVE	COUNTY	PAVED		934.29
FIREHOUSE RD	PRIVATE	UNPAVED		2700.21
GREEN VALLEY CT	PRIVATE	UNPAVED		876.68
HANNAH CT	COUNTY	PAVED		373.33
HATHEWAY LN	PRIVATE	UNPAVED		638.15
HAWTHORN ST	COUNTY	PAVED		724.72
HILDA RD	PRIVATE	UNPAVED		1165.80
HOMESTAKE RD	COUNTY	UNPAVED		514.77
JARMON RD	PRIVATE	UNPAVED		1948.60
JOHN GRISHAM DR	COUNTY	PAVED		1294.46
KIRKPATRICK AVE	COUNTY	UNPAVED		2305.77
LAS PARCELAS LP	COUNTY	PAVED		1139.41
LOST DUTCHMAN DR	COUNTY	UNPAVED		1357.71
MARAVILLA LN	PRIVATE	UNPAVED		716.93
MARK TWAIN CT	COUNTY	PAVED		361.48
MINTER RD	COUNTY	PAVED		2344.34
NORTH LAKE RD	PRIVATE	UNPAVED		777.82
PEPPERMINT PL	PRIVATE	UNPAVED		650.15
POST ST	COUNTY	PAVED		1062.63
RICE CT	COUNTY	PAVED		431.38
SANTO TOMAS ST	COUNTY	PAVED		1018.83
SEGOVIA LN	PRIVATE	UNPAVED		1065.56
SEQUOIA RD	COUNTY	PAVED		3287.00
SIERRA MADRE DR	COUNTY	UNPAVED		865.92
TAWA AVE	PRIVATE	UNPAVED		1054.61
THREE SONS RD	PRIVATE	UNPAVED		2799.54
TRES CABALLOS PL	PRIVATE	UNPAVED		2681.91
UNNAMED RD	PRIVATE	PAVED		377.07
WANNABE RD	PRIVATE	UNPAVED		732.75
WHITE OAKS RD	COUNTY	UNPAVED		664.15

County (lf)		Private (lf)	
25,858.60		22,202.35	
Paved	Unpaved	Paved	Unpaved
14,798.63	11,059.97	3,928.77	18,273.59

Montana Vista				
ALAMO SECO RD	PRIVATE	UNPAVED		1212.48
ANGEL WINGS CT	PRIVATE	UNPAVED		1133.03
ARELLANO RD	PRIVATE	UNPAVED		1071.31
BENT WILLOW PL	PRIVATE	UNPAVED		410.50
BERINO SCHOOL RD	COUNTY	PAVED		651.05
BERINO SCHOOL RD	PRIVATE	UNPAVED		343.97
BIGHORN ST	PRIVATE	UNPAVED		2148.22
BRIZA PL	PRIVATE	UNPAVED		351.57
CAMARGO ST	PRIVATE	UNPAVED		2384.89
DEL ORO LN	PRIVATE	UNPAVED		665.88
DELICIAS ST	PRIVATE	UNPAVED		1466.92
E. JOY DR	COUNTY	PAVED		5670.10
EL NOGAL LN	PRIVATE	UNPAVED		929.67
ERNESTO RD	PRIVATE	UNPAVED		1038.66
GAZELLE CT	PRIVATE	UNPAVED		806.62
HONEYSUCKLE LN	PRIVATE	UNPAVED		999.58
HOPE FARM RD	PRIVATE	UNPAVED		575.82
HORSE RIDE PL	PRIVATE	UNPAVED		820.33
LEIFESTE AVE	PRIVATE	UNPAVED		1335.01
LIMON RD	PRIVATE	UNPAVED		642.50
LIPPS RD	PRIVATE	UNPAVED		542.50
LOS ENCINOS WAY	PRIVATE	UNPAVED		725.70
LOS OLIVOS RD	PRIVATE	UNPAVED		2428.53

County (lf)		Private (lf)	
18,713.40		40,931.19	
Paved	Unpaved	Paved	Unpaved
15,030.55	3,682.85	0.00	40,931.19

MEOQUI AVE	PRIVATE	UNPAVED	634.77
MONTANA AZUL ST	PRIVATE	UNPAVED	2462.84
MONTANA VISTA AVE	COUNTY	PAVED	1826.01
MONTE BELLO RD	PRIVATE	UNPAVED	1345.50
MULEDEER TRL	PRIVATE	UNPAVED	1098.41
N. ESPIGA PL	PRIVATE	UNPAVED	677.09
N. GRAY QUAIL PL	PRIVATE	UNPAVED	386.08
NANEZ RD	PRIVATE	UNPAVED	1227.87
NIGHT OWL LN	PRIVATE	UNPAVED	655.91
NUEZ CT	PRIVATE	UNPAVED	460.07
PULASKI WAY	PRIVATE	UNPAVED	696.84
RED ROCK CT	PRIVATE	UNPAVED	1468.29
S. ESPIGA PL	PRIVATE	UNPAVED	193.15
S. GRAY QUAIL PL	PRIVATE	UNPAVED	437.29
SANTA MARIA LN	PRIVATE	UNPAVED	1530.37
SHRODE RD	COUNTY	PAVED	6620.51
SIDEWINDER RD	PRIVATE	UNPAVED	1004.99
SOLDADO CT	PRIVATE	UNPAVED	593.46
STARLIGHT LN	PRIVATE	UNPAVED	781.60
VENADITO TRL	PRIVATE	UNPAVED	3242.95
W. JOY DR	COUNTY	PAVED	262.88
WARTHEN RD	COUNTY	UNPAVED	3682.85

Moongate

ARCO IRIS ST	PRIVATE	UNPAVED	649.54
ARROWHEAD RD	PRIVATE	UNPAVED	5651.54
ARROYO RD	PRIVATE	UNPAVED	4565.41
AURORA PL	PRIVATE	UNPAVED	356.94
BERTALS LN	PRIVATE	UNPAVED	292.45
BRAHMAN RD	COUNTY	PAVED	1654.40
BUMPY LN	PRIVATE	UNPAVED	558.00
CALLE CHICA	PRIVATE	UNPAVED	468.97
CALLE DEL LLANO	PRIVATE	PAVED	931.11
CHALLENGER PL	PRIVATE	UNPAVED	7.74
CORONA RD	COUNTY	PAVED	2676.60
CORONA RD	PRIVATE	UNPAVED	5215.98
COUGAR LN	PRIVATE	UNPAVED	1313.75
COYOTE RD	PRIVATE	UNPAVED	5409.65
DAWN LN	PRIVATE	UNPAVED	523.01
DRAGONFLY AVE	COUNTY	PAVED	5237.83
EAGLE RD	PRIVATE	UNPAVED	2745.79
EL CENTRO BLVD	COUNTY	PAVED	10554.20
EL NORTE RD	PRIVATE	UNPAVED	660.58
FOX RD	PRIVATE	UNPAVED	9849.11
GOPHER RD	PRIVATE	UNPAVED	5405.76
GREEN HILL CT	PRIVATE	UNPAVED	305.62
HAWK RD	PRIVATE	UNPAVED	5373.11
HONDO RD	COUNTY	UNPAVED	2628.85
HONDO RD	PRIVATE	UNPAVED	2649.02
INDIAN HEAD RD	PRIVATE	UNPAVED	2627.90
JACK RABBIT RD	PRIVATE	UNPAVED	8050.72
LUNA VISTA RD	COUNTY	UNPAVED	2679.67
LUNA VISTA RD	COUNTY	PAVED	6587.90
MACARTHUR RD	COUNTY	UNPAVED	2634.65
MACARTHUR RD	COUNTY	PAVED	5389.26
MACARTHUR RD	PRIVATE	UNPAVED	1330.04
MOONGATE RD	COUNTY	PAVED	10633.77
NEVAREZ CT	PRIVATE	UNPAVED	1035.12
OWLS NEST RD	PRIVATE	UNPAVED	1314.53
PRAIRIE DOG RD	PRIVATE	UNPAVED	5406.41
QUAIL VALLEY PL	COUNTY	PAVED	411.68
SCHAFFNER RD	PRIVATE	UNPAVED	2616.74
SUNRAY ST	PRIVATE	UNPAVED	1306.34
TERRITORIAL ST	PRIVATE	PAVED	1130.02

County (lf)		Private (lf)	
51,088.82		84,375.59	
Paved	Unpaved	Paved	Unpaved
43,145.65	7,943.17	4,432.22	79,943.36

TRES YUCCAS RD	PRIVATE	UNPAVED	2613.55
TURN HERE RD	PRIVATE	UNPAVED	557.02
UNICORN LN	PRIVATE	UNPAVED	338.00
UNKNOWN	PRIVATE	PAVED	1362.96
VEREDA GRANATE RD	PRIVATE	UNPAVED	400.45
VISTA DEL NORTE ST	PRIVATE	PAVED	1008.14
VISTA DEL NORTE ST	PRIVATE	UNPAVED	344.56

Mountain View

ARROYO RD	PRIVATE	UNPAVED	2606.01
CHAMISO PL	PRIVATE	UNPAVED	655.06
CLIFFHANGER CT	PRIVATE	UNPAVED	489.27
CORONA RD	COUNTY	PAVED	2600.13
ENGLEHARDT RD	COUNTY	PAVED	1297.00
ERICKSON RD	PRIVATE	UNPAVED	1784.82
EVON DR	PRIVATE	UNPAVED	1322.80
GALAXY DR	COUNTY	PAVED	1694.68
GREEN HILL CT	PRIVATE	UNPAVED	10.59
HANGER LAKE RD	COUNTY	PAVED	1978.31
HANGER LAKE RD	PRIVATE	UNPAVED	2631.60
IVORY WING LN	PRIVATE	UNPAVED	1083.95
JAN LN	PRIVATE	UNPAVED	848.95
JEFFRIES ST	PRIVATE	UNPAVED	2634.96
LISA LN	PRIVATE	UNPAVED	2623.20
LUNA VISTA RD	COUNTY	PAVED	1228.60
MISSION LN	PRIVATE	UNPAVED	1793.12
RED ROOF CT	PRIVATE	UNPAVED	701.92
RHONDA LN	PRIVATE	UNPAVED	1295.85
SANDY ST	PRIVATE	UNPAVED	413.00
SCOTT LN	PRIVATE	UNPAVED	1279.67
SEXTON LN	PRIVATE	UNPAVED	1965.63
SILVERMOON CT	PRIVATE	UNPAVED	527.92
TAMMY LN	PRIVATE	UNPAVED	2484.56
THREEAWN	PRIVATE	UNPAVED	404.09
VENTURA CIR	PRIVATE	UNPAVED	1314.24
VISTA DEL NORTE ST	PRIVATE	UNPAVED	0.69
WAGONS CT	COUNTY	PAVED	294.58
WAGONS EAST TRL	PRIVATE	PAVED	3246.75
WEISNER RD	COUNTY	PAVED	5541.72
WEISNER RD	PRIVATE	UNPAVED	514.36
WHITE WING RD	PRIVATE	UNPAVED	846.39

County (lf)		Private (lf)	
14,635.02		33,479.40	
Paved	Unpaved	Paved	Unpaved
14,635.02	0.00	3,246.75	30,232.65

Old Picacho

CALLE CHIQUITA	PRIVATE	UNPAVED	248.85
CALLE DEL CENTRO	COUNTY	PAVED	578.30
CUESTA RD	COUNTY	UNPAVED	614.18
LADERA AVE	COUNTY	PAVED	710.99
OLD PICACHO RD	COUNTY	PAVED	1381.85
PLAYA LN	COUNTY	PAVED	478.21
PLAYA LN	PRIVATE	UNPAVED	443.55
PUERTA LN	PRIVATE	UNPAVED	111.62
SHALEM COLONY TRL	COUNTY	PAVED	596.95
SIESTA LN	PRIVATE	UNPAVED	399.03
TRUCHA DR	COUNTY	UNPAVED	1058.60

County (lf)		Private (lf)	
5,419.08		1,203.04	
Paved	Unpaved	Paved	Unpaved
3,746.30	1,672.78	0.00	1,203.04

Organ

1ST ST	COUNTY	UNPAVED	170.37
1ST ST	COUNTY	PAVED	1040.66
2ND ST	COUNTY	UNPAVED	160.63
2ND ST	COUNTY	PAVED	752.74
3RD ST	COUNTY	UNPAVED	3547.36
3RD ST	COUNTY	PAVED	1105.04
4TH ST	COUNTY	UNPAVED	170.37
4TH ST	COUNTY	PAVED	1126.27
5TH ST	COUNTY	UNPAVED	1123.06
A ST	COUNTY	UNPAVED	1160.58

County (lf)		Private (lf)	
17,542.81		6,679.23	
Paved	Unpaved	Paved	Unpaved
9,416.58	8,126.23	1,049.74	5,629.49

B ST	COUNTY	UNPAVED	1793.87
COUNTY ROAD D-087	COUNTY	PAVED	337.84
FURNACE ST	COUNTY	PAVED	2559.08
HAWKEYE CANYON CT	PRIVATE	UNPAVED	658.29
OLD ORGAN MAIN ST	COUNTY	PAVED	691.52
ORGAN PATH LN	PRIVATE	UNPAVED	2068.21
PADRE LA RUE ST	COUNTY	PAVED	1803.43
SABER RIDGE CT	PRIVATE	UNPAVED	1724.52
SLY SONG CIR	PRIVATE	PAVED	1049.74
TRINITY RIDGE DR	PRIVATE	UNPAVED	1178.48

Placitas

ALBIDRES ST	COUNTY	PAVED	935.31
ALBIDRES ST	PRIVATE	UNPAVED	100.41
BIANES ST	COUNTY	PAVED	940.72
MONTICELLO AVE	COUNTY	PAVED	702.40
PICAFLO AVE	COUNTY	PAVED	640.84
PLACITAS AVE	COUNTY	PAVED	1337.34
S. CASTANEDA RD	COUNTY	PAVED	415.03
TOPEKA AVE	COUNTY	PAVED	1141.62
TRUJILLO ST	COUNTY	PAVED	1369.58
TRUJILLO ST	PRIVATE	UNPAVED	226.98

Radium Springs

NIGHTHAWK LN	PRIVATE	UNPAVED	1335.58
RIO NORTE DR	PRIVATE	PAVED	14.06

Rincon

BAKER ST	COUNTY	PAVED	362.58
BAKER ST	PRIVATE	UNPAVED	698.04
BEDROCK PL	COUNTY	PAVED	297.25
BEDROCK PL	PRIVATE	UNPAVED	238.66
CACTUS ST	COUNTY	UNPAVED	1068.48
COREA ST	COUNTY	PAVED	1025.59
COUNTY ROAD E-016	COUNTY	UNPAVED	7.35
DERRY AVE	COUNTY	PAVED	1435.37
HARLAN ST	COUNTY	PAVED	363.07
HARLAN ST	PRIVATE	UNPAVED	704.97
HAUSER ST	PRIVATE	UNPAVED	865.92
INCA ST	PRIVATE	UNPAVED	409.91
KINGMAN ST	COUNTY	PAVED	367.68
KINGMAN ST	PRIVATE	UNPAVED	528.58
MANTOOTH LP	COUNTY	PAVED	1759.61
PALMILLA ST	COUNTY	UNPAVED	1063.19
SABERTOOTH LN	COUNTY	UNPAVED	521.53
TOLTEC RD	PRIVATE	UNPAVED	863.66

Rodey

E. BENINO TORRES AVE	COUNTY	PAVED	1039.19
E. FLORENCIO LOPEZ AVE	COUNTY	PAVED	721.89
E. JESUS SILVA AVE	COUNTY	UNPAVED	177.81
E. JESUS SILVA AVE	COUNTY	PAVED	718.54
GREGORIO MIRANDA ST	COUNTY	UNPAVED	300.73
GREGORIO MIRANDA ST	COUNTY	PAVED	722.59
N. EL COLORADO ST	COUNTY	PAVED	1119.89
N. JOSE SERNA ST	COUNTY	UNPAVED	322.38
N. JOSE SERNA ST	COUNTY	PAVED	745.49
N. MARIANO TRUJILLO ST	COUNTY	UNPAVED	579.99
N. MARIANO TRUJILLO ST	COUNTY	PAVED	360.97
N. VICTOR DURAN ST	COUNTY	UNPAVED	376.20
S. EL COLORADO ST	COUNTY	UNPAVED	280.67
S. EL COLORADO ST	COUNTY	PAVED	559.46
S. MARIANO TRUJILLO ST	COUNTY	UNPAVED	204.37
S. VICTOR DURAN ST	COUNTY	UNPAVED	880.55
UNNAMED	UNIMPROVED TRAIL	UNIMPROVED	1721.79

County (lf)		Private (lf)	
7,482.84		327.39	
Paved	Unpaved	Paved	Unpaved
7,482.84	0.00	0.00	327.39

County (lf)		Private (lf)	
0.00		1,349.64	
Paved	Unpaved	Paved	Unpaved
0.00	0.00	14.06	1,335.58

County (lf)		Private (lf)	
8,271.71		4,309.74	
Paved	Unpaved	Paved	Unpaved
5,611.16	2,660.55	0.00	4,309.74

County (lf)		Private (lf)	
11,022.68		816.47	
Paved	Unpaved	Paved	Unpaved
6,589.40	4,433.27	0.00	816.47

W. BENINO TORRES AVE	COUNTY	PAVED	601.38
W. FLORENCIO LOPEZ AVE	COUNTY	UNPAVED	356.15
W. FLORENCIO LOPEZ AVE	PRIVATE	UNPAVED	816.47
W. JESUS SILVA AVE	COUNTY	UNPAVED	323.95
W. LUCIANO CHAVEZ ST	COUNTY	UNPAVED	630.47

Salem

ABRAHAM AVE	PRIVATE	UNPAVED	881.17
B. B. ROMIG DR	COUNTY	PAVED	1522.25
CARRIAGE HILLS RD	COUNTY	PAVED	1976.52
COOLIDGE AVE	PRIVATE	UNPAVED	248.82
EISENHOWER AVE	COUNTY	PAVED	1310.15
FATHER RAMON ESTIVILL AVE	COUNTY	PAVED	2300.00
FLORENCIO ST	COUNTY	PAVED	1302.10
FORD ST	COUNTY	PAVED	1310.35
GARFIELD AVE	COUNTY	PAVED	1924.56
GRANDE AVE	COUNTY	UNPAVED	1039.31
GRANDE AVE	COUNTY	PAVED	1712.58
HAYES ST	COUNTY	PAVED	1304.33
HOOVER ST	COUNTY	PAVED	1309.34
OGAZ AVE	COUNTY	PAVED	1291.88
PRESIDENTE AVE	PRIVATE	UNPAVED	952.42
SALEM ST	COUNTY	UNPAVED	13.06
SALEM ST	COUNTY	PAVED	2758.34
SEMPER FI AVE	PRIVATE	UNPAVED	1092.49
TRUMAN ST	COUNTY	PAVED	1299.61
ULYSSES AVE	COUNTY	PAVED	2296.35

County (If)		Private (If)	
24,670.73		3,174.90	
Paved	Unpaved	Paved	Unpaved
23,618.36	1,052.37	0.00	3,174.90

San Isidro

SAN YSIDRO RD	COUNTY	PAVED	1960.49

County (If)		Private (If)	
1,960.49		0.00	
Paved	Unpaved	Paved	Unpaved
1,960.49	0.00	0.00	0.00

San Miguel

ALARGO DR	COUNTY	PAVED	2536.90
ARCHER FARM RD	COUNTY	PAVED	4898.57
AVENIDA DEL PANTEON	COUNTY	UNPAVED	1562.67
AVENIDA DEL PANTEON	COUNTY	PAVED	4080.31
CALLE DE LAS FLORES	COUNTY	PAVED	554.56
CALLE DE LUCERO	COUNTY	PAVED	1021.66
CAMINO ALEGRE	PRIVATE	UNPAVED	1024.59
CAMUNEZ RD	PRIVATE	UNPAVED	2068.56
CASCADE AVE	COUNTY	PAVED	1153.58
CASTILLO PL	COUNTY	PAVED	550.66
CASTILLO RD	COUNTY	PAVED	8188.12
COUNTY ROAD B-010	COUNTY	UNPAVED	11274.69
COUNTY ROAD B-041	COUNTY	UNPAVED	1346.28
COUNTY ROAD B-042	COUNTY	UNPAVED	1724.54
D. E. RODRIGUEZ RD	PRIVATE	UNPAVED	1132.91
E. SAVANNAH RD	COUNTY	PAVED	820.26
EDELMIRA ST	PRIVATE	UNPAVED	467.57
GONZALES RD	PRIVATE	UNPAVED	1387.45
LAS COLMENAS RD	PRIVATE	UNPAVED	1544.93
LAS FLORES CIR	COUNTY	PAVED	1933.08
MAPLEWOOD AVE	PRIVATE	UNPAVED	325.32
MAPLEWOOD AVE	COUNTY	PAVED	317.80
MOONLIGHT RD	PRIVATE	UNPAVED	919.09
NOPAL LN	PRIVATE	UNPAVED	325.62
OZARK ST	COUNTY	PAVED	652.67
PEACEFUL PINES LN	PRIVATE	UNPAVED	1696.37
RAG WEED TRL	PRIVATE	UNPAVED	888.91
ROSEWOOD ST	COUNTY	PAVED	473.79
STARDUST RD	PRIVATE	UNPAVED	887.68
TIERRA DEL SOL	COUNTY	PAVED	996.35
TWILIGHT RD	COUNTY	UNPAVED	652.16

County (If)		Private (If)	
48,153.89		13,086.01	
Paved	Unpaved	Paved	Unpaved
31,505.18	16,648.71	0.00	13,086.01

VISTA ELEGANTE CT	PRIVATE	UNPAVED	417.01
VOYAGER ST	COUNTY	PAVED	600.07
W. SAVANNAH RD	COUNTY	UNPAVED	88.36
W. SAVANNAH RD	COUNTY	PAVED	2726.79

San Pablo

AVENIDA DE QUINTAS	COUNTY	PAVED	2153.52
CALLE DE OSO	PRIVATE	UNPAVED	305.58
CHELSEA RD	PRIVATE	UNPAVED	1128.91
EL FARO ST	COUNTY	PAVED	1495.68
LAMAR RD	COUNTY	PAVED	1630.43
MICAN CT	PRIVATE	UNPAVED	266.62
ORCHARD AVE	PRIVATE	UNPAVED	1208.81
SAN PABLO RD	COUNTY	PAVED	1260.24
SANTA CRUZ RD	PRIVATE	UNPAVED	2225.53
SAUCO LN	PRIVATE	UNPAVED	539.54
STRYKER RD	PRIVATE	UNPAVED	869.87
VICHIS CT	PRIVATE	UNPAVED	502.77

County (lf)		Private (lf)	
6,539.87		7,047.62	
Paved	Unpaved	Paved	Unpaved
6,539.87	0.00	0.00	7,047.62

Tortugas

BLACKHAWK ST	COUNTY	UNPAVED	478.13
BLACKHAWK ST	COUNTY	PAVED	1710.45
CASA DE PUEBLO ST	COUNTY	PAVED	558.60
EMILIA AVE	COUNTY	PAVED	1801.50
EUGENIO ST	COUNTY	PAVED	269.36
GUADALUPE ST	COUNTY	PAVED	1398.80
JUAN DIEGO AVE	COUNTY	PAVED	2719.07
PAROQUIA ST	COUNTY	PAVED	2084.49
PIRO AVE	COUNTY	PAVED	1745.22
RENTERIA ST	COUNTY	PAVED	1619.93
SAN FELIPE AVE	COUNTY	PAVED	2652.22
SAN FRANCISCO ST	COUNTY	PAVED	2439.51
TEPEYAC ST	COUNTY	PAVED	559.11
TIGUA DR	COUNTY	PAVED	1789.71
TILE AVE	COUNTY	PAVED	2344.14
TURTLEDOVE PL	PRIVATE	UNPAVED	528.47
UNNAMED RD	COUNTY	PAVED	145.29

County (lf)		Private (lf)	
24,315.54		528.47	
Paved	Unpaved	Paved	Unpaved
23,837.41	478.13	0.00	528.47

Vado

APIO LN	PRIVATE	UNPAVED	0.19
BOY LN	PRIVATE	UNPAVED	448.64
BOYER RD	COUNTY	UNPAVED	1738.71
BRADY BACK CT	PRIVATE	UNPAVED	696.62
BRADY ST	PRIVATE	UNPAVED	2334.00
CEBOLLA LN	PRIVATE	UNPAVED	3314.02
CENTER VALLEY RD	COUNTY	UNPAVED	674.76
CHIHUAHUA AVE	PRIVATE	UNPAVED	1162.79
CILANTRO LN	PRIVATE	UNPAVED	3.38
COLEMAN RD	PRIVATE	UNPAVED	1123.56
COORS RD	PRIVATE	UNPAVED	1907.56
CRAZY HORSE AVE	PRIVATE	UNPAVED	1838.11
ELLA MAE RD	PRIVATE	UNPAVED	1312.96
ESQUINA DR	PRIVATE	UNPAVED	1411.08
ESTANCIA ST	PRIVATE	UNPAVED	2751.27
FUENTES LN	PRIVATE	UNPAVED	541.63
GOMEZ RD	PRIVATE	UNPAVED	805.46
HIGH VALLEY RD	COUNTY	PAVED	25.36
HIGHLINE RD	PRIVATE	UNPAVED	1480.75
HOLGUIN RD	COUNTY	UNPAVED	1606.45
HOLGUIN RD	COUNTY	PAVED	5266.40
INDIO WAY	PRIVATE	UNPAVED	590.24
JOEL DR	COUNTY	PAVED	322.00
LECHUGA RD	COUNTY	PAVED	3005.20
LECHUGA RD	PRIVATE	UNPAVED	1054.98
LUNA BLANCA CT	PRIVATE	UNPAVED	320.31
McCRIMON ST	COUNTY	PAVED	1191.41

County (lf)		Private (lf)	
17,706.36		31,469.72	
Paved	Unpaved	Paved	Unpaved
13,686.44	4,019.92	0.00	31,469.72

MOSQUITO CT	PRIVATE	UNPAVED	1072.69
MYERS RD	COUNTY	PAVED	777.84
MYERS RD	PRIVATE	UNPAVED	1931.89
OLLIN LN	COUNTY	PAVED	632.59
PATTY LN	PRIVATE	UNPAVED	474.20
PRESA AVE	PRIVATE	UNPAVED	1294.49
QUINTO SOL LP	COUNTY	PAVED	1048.05
TAPIR ROAD	COUNTY	PAVED	1417.60
TARIN RD	PRIVATE	UNPAVED	909.48
UNNAMED RD	PRIVATE	UNPAVED	219.19
WARD RD	PRIVATE	UNPAVED	2470.24

Winterhaven

BURKE RD	COUNTY	PAVED	1495.63
ROADRUNNER LN	COUNTY	PAVED	1575.35
WINTERHAVEN DR	COUNTY	PAVED	2243.35

County (lf)		Private (lf)	
5,314.34		0.00	
Paved	Unpaved	Paved	Unpaved
5,314.34	0.00	0.00	0.00
Totals			
County (lf)		Private (lf)	
1,157,085.79		477,379.25	
Paved	Unpaved	Paved	Unpaved
831,987.25	325,098.54	33,996.04	443,383.22

COST ESTIMATE

COST PER MILE PAVED		COST PER MILE UNPAVED	
\$125,000.00		\$1,000,000.00	
COUNTY			
PAVED	UNPAVED	TOTAL	
\$19,696,667.87	\$61,571,693.38	\$81,268,361.25	
PRIVATE			
PAVED	UNPAVED	TOTAL	
\$804,830.39	\$83,974,094.50	\$84,778,924.89	
GRAND TOTAL			
\$166,047,286.14			

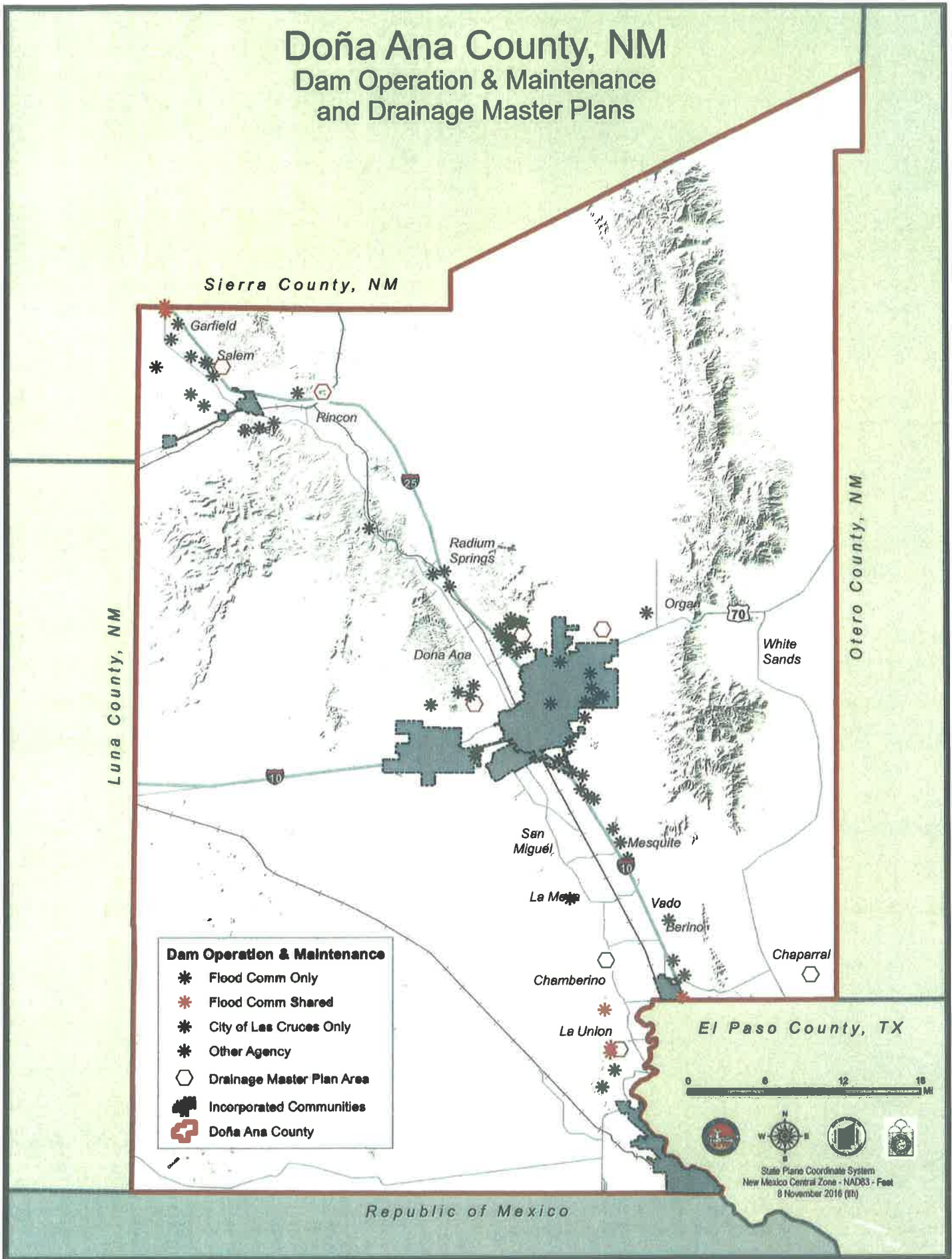
APPENDIX C

STORMWATER MANAGEMENT

- **MAP OF DAMS & DRAINAGE MASTER PLANS**
- **PROJECT SUMMARIES**

Doña Ana County, NM

Dam Operation & Maintenance and Drainage Master Plans



Flood

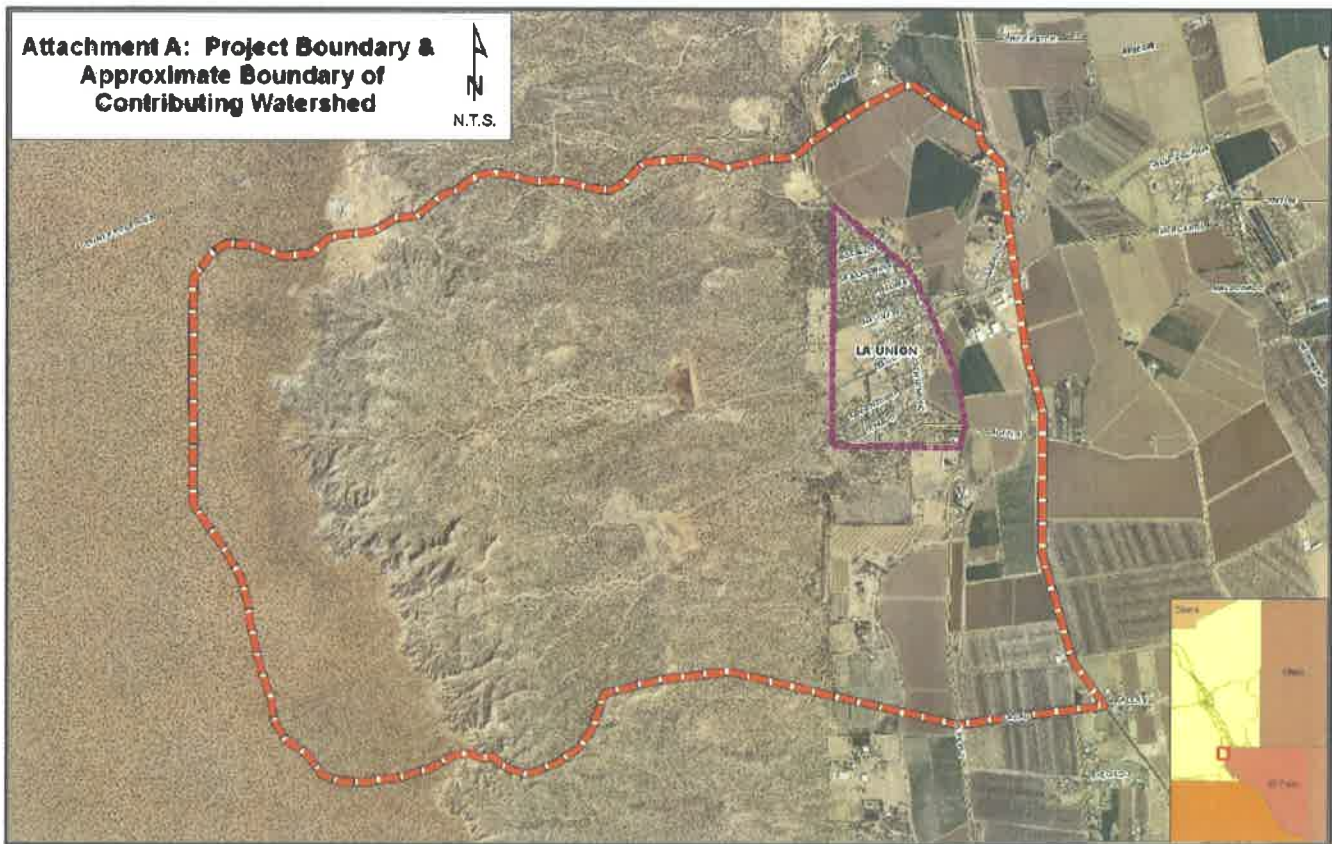
The Flood Commission continues to work on identifying flooding issues throughout the county. Our primary tool is to develop Drainage Master Plans (DMPs) for the affected areas. The DMPs quantify the flood water that needs to be addressed and identifies capital projects that can reduce or alleviate flooding. The following is a list of completed DMPs associated with colonias and the cost of the capital projects that are not currently on the ICIP:

La Union	\$20,000,000
East Mesa	\$58,100,000
Chaparral	\$41,000,000
Old Pichaco	\$ 8,650,000
Salem	\$ 1,700,000
Rincon	\$ 1,000,000
Chamberino	\$ 2,700,000
Total	<u>\$133,150,000</u>

Drainage Master Plans are currently underway for the colonias of Doña Ana, Montana Vista and Mesquite. The Village of Hatch is currently working on a Drainage Master Plan for the Placitas Arroyo the impacts the Village of Hatch, and the colonias of Placitas and Milagro. The costs listed above do not include improvements of the existing flood control structures.

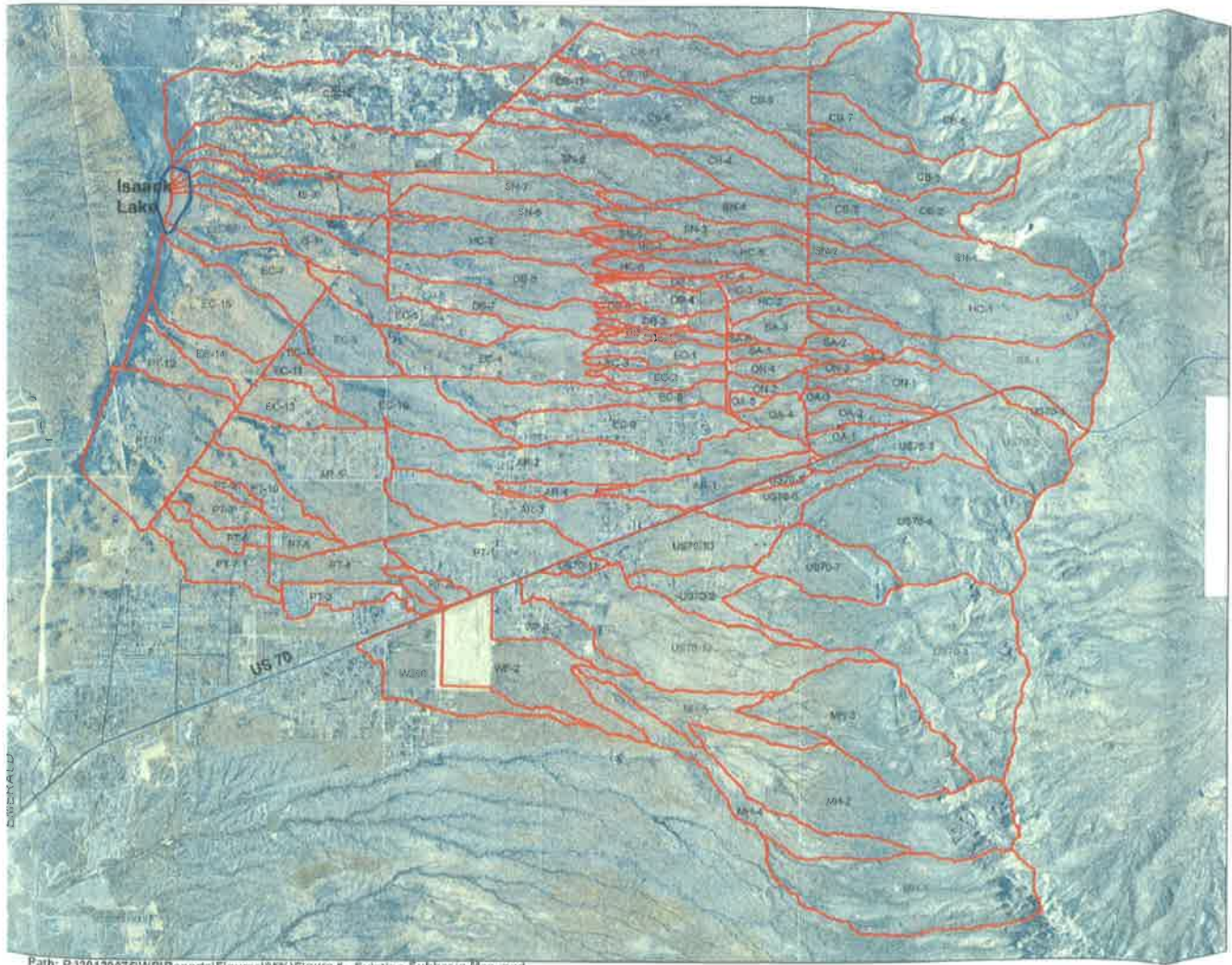
La Union

The Colonia of La Union is a small community with a population of approximately 300 located approximately 26.6 miles southeast of Las Cruces, NM, 10.9 miles northwest of Sunland Park, NM and 1.2 miles west of the intersection of State Hwy 28 and Mercantil Ave. The community is built downstream of 2 small dams that were built to protect farm fields from sediment that washes into the fields during storms. The contributing watershed is 3.25 square miles with an elevation change of over 300 ft. The dams were never intended to protect people or homes and do not meet any of the current design standards. A Drainage Master Plan was completed in 2013 that identified the infrastructure necessary to replace the existing structures. It was determined that the most cost effective solution is to construct a new flood control dam that would release water in a measure and controlled flow. Due to existing topography and infrastructure it is necessary to release the storm water into an existing irrigation drain. Additional, as yet undefined, improvements are necessary to provide sufficient capacity in the drain. The proposed projects have an estimated cost of \$20,000,000.



East Mesa

The East Mesa is an area directly adjacent to and north east of the City of Las Cruces, NM. The watershed covers approximately 60 square miles with an elevation change of over 3400 ft. The area incorporates the colonias of Butterfield Park, Cattleland Estates, Mountain view, and Moongate. Below is a map showing the watershed.



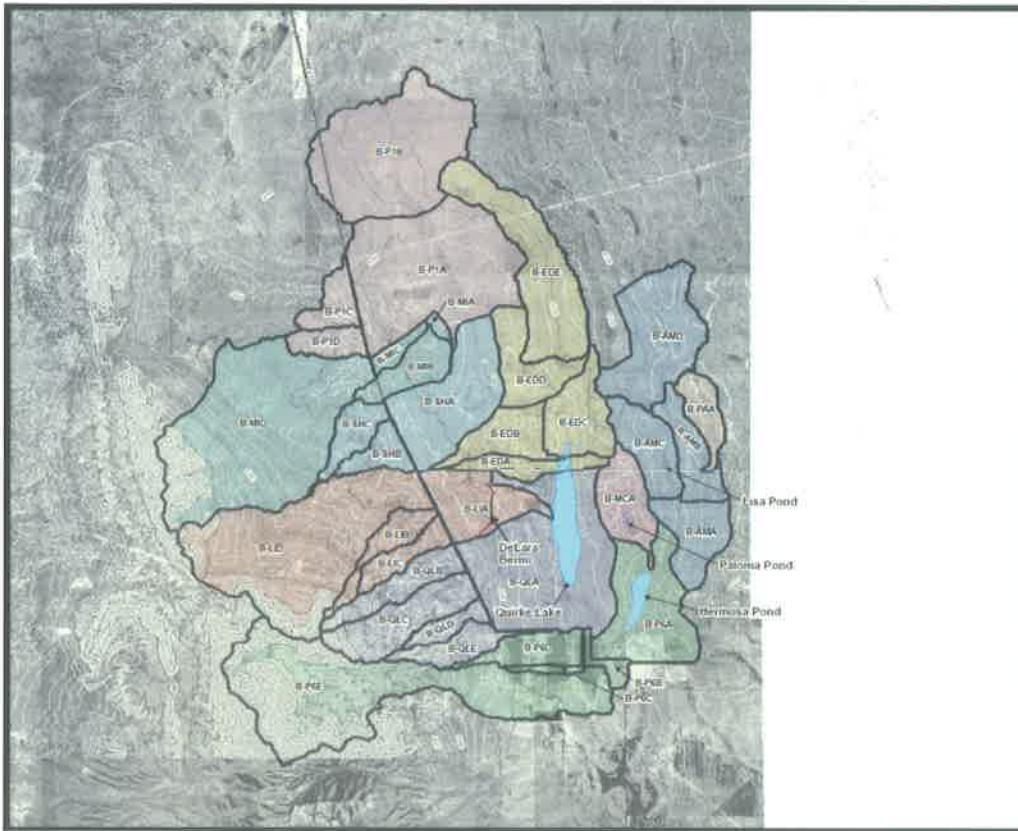
Path: P:\20120075\WR\Reports\Figures\BKN\Figure 8 - Existing Subbasin Map.mxd

The flow patterns for the watershed are varied and complex. Over many years small subdivisions were developed without an overall drainage plan, making the capital improvements necessary more costly. The estimated cost for the proposed improvements for the East Mesa is \$58,100,000. Below is a map showing the proposed projects.



Chaparral

The unincorporated community of Chaparral is located in southeastern Doña Ana County west of the Franklin Mountains, immediately north of El Paso, Texas. Open space surrounds the community with much of the adjacent property under the jurisdiction of the Bureau of Land Management (BLM), the New Mexico State Land Office and McGregor Range (U.S. Military). There are 15 major arroyo systems originating out of the mountains flowing into the community, which includes 20,000 acres of undeveloped land. In addition, 4 minor drainage basins located in Texas with 4,640 acres of undeveloped land contribute to the watersheds that affect Chaparral. The total water shed is 38.5 square miles with an elevation change of over 1230 feet.



CHAPARRAL DRAINAGE MASTER PLAN
CHAPARRAL, NEW MEXICO

DRAINAGE BASINS

Exhibit 8B



0 3,500 7,000 14,000 FT
1 inch equals 3,500 feet

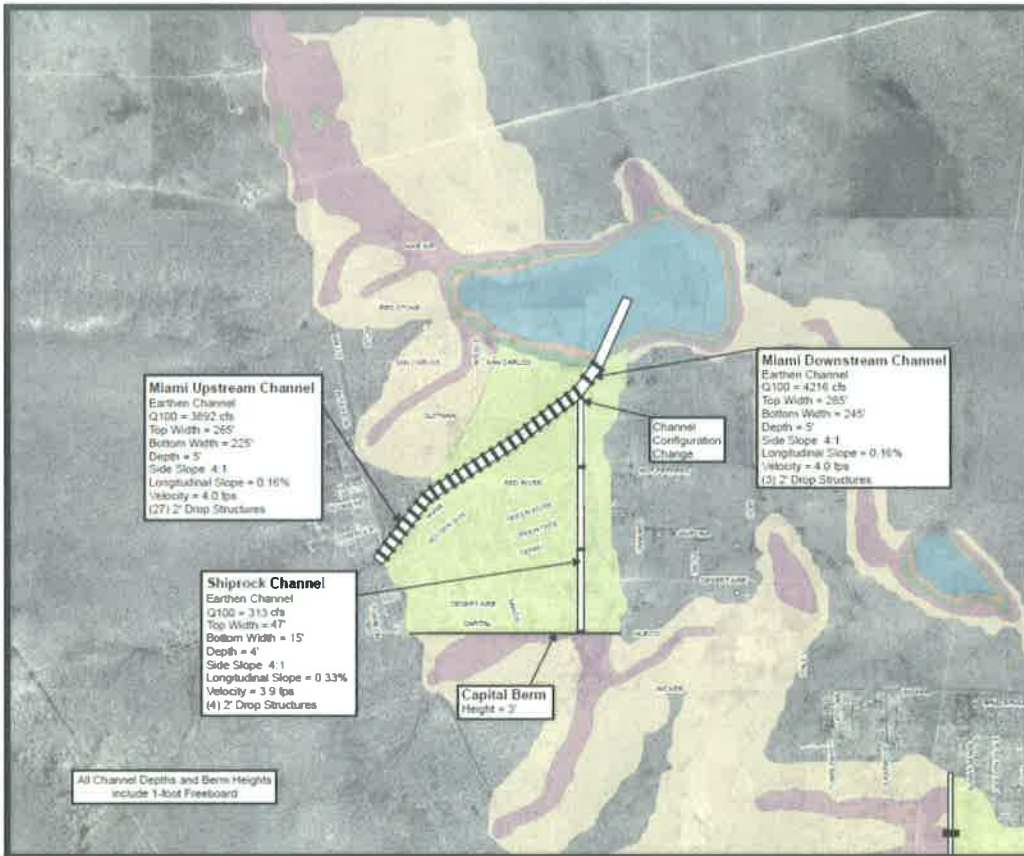
URS

The estimated cost of improvements for Chaparral is \$41,000,000. The next 3 maps show the proposed improvements.



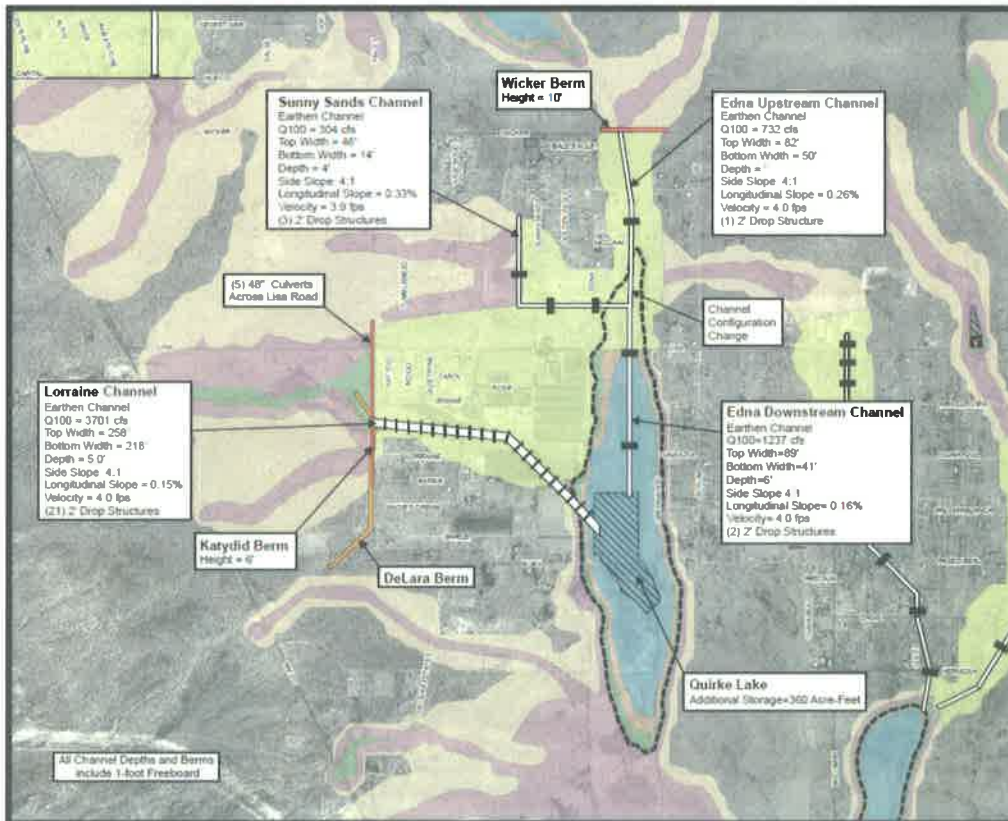
PROPOSED IMPROVEMENT NORTH SYSTEM

Exhibit 13B



PROPOSED IMPROVEMENT CENTRAL SYSTEM

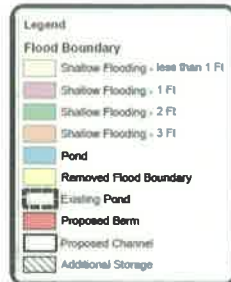
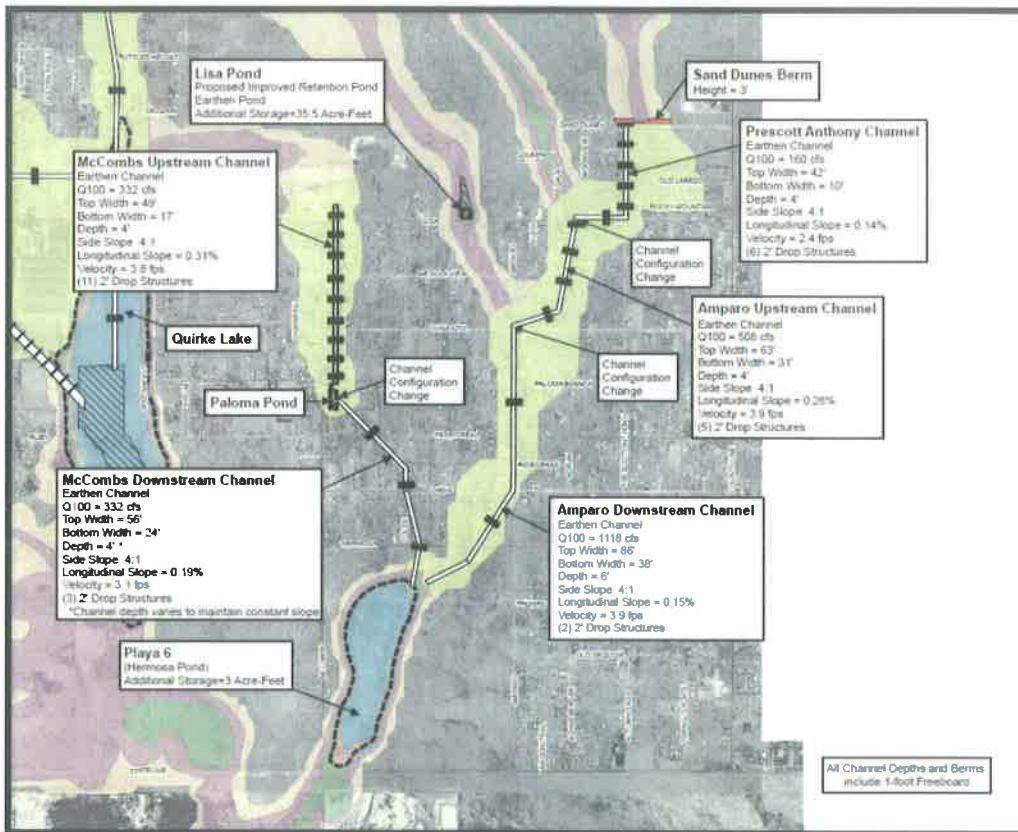
Exhibit 14B





PROPOSED IMPROVEMENT SOUTH SYSTEM

Exhibit 15B

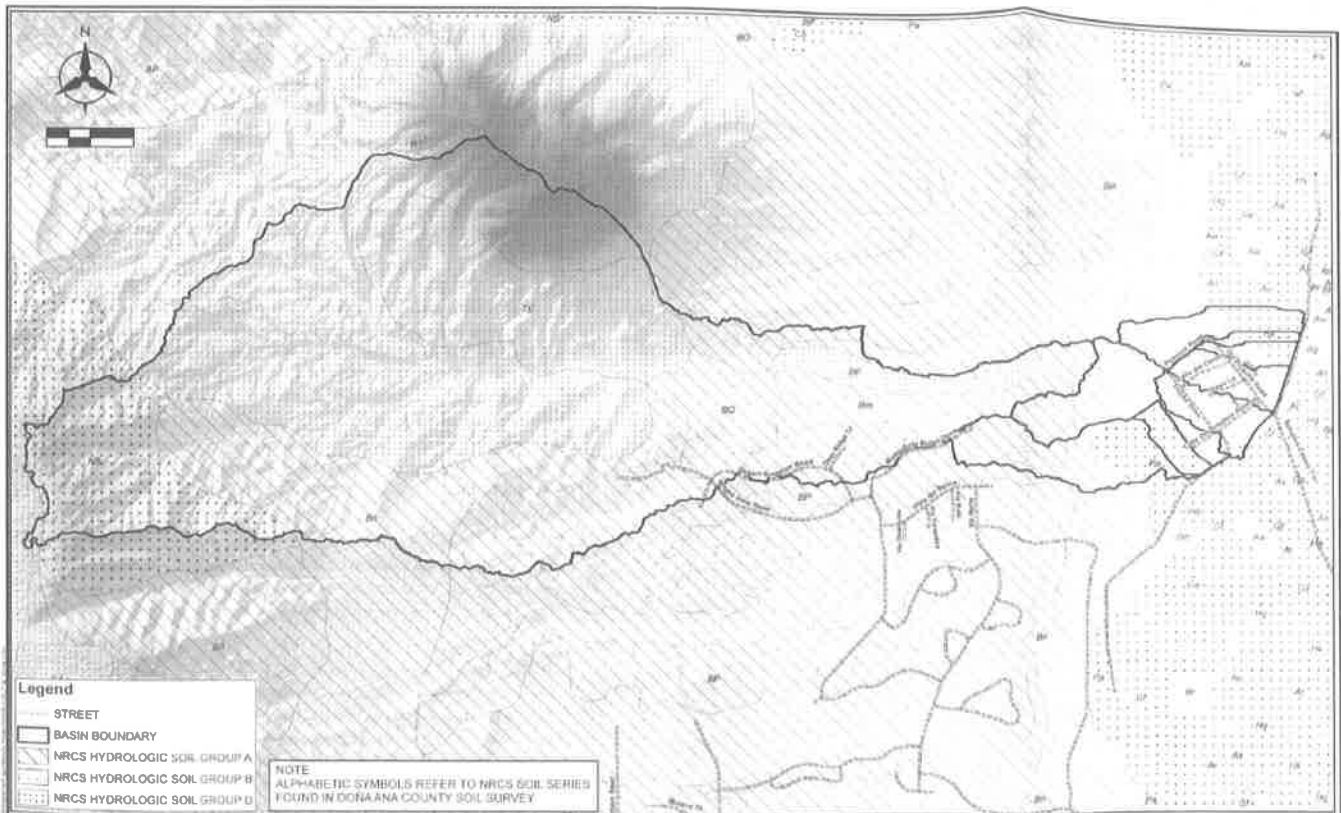


0 1,000 2,000 4,000 Ft
1 inch equals 1,000 feet



Old Picacho

The community of Old Picacho is located west of Las Cruces, north of Picacho Avenue, on Shalom Colony Trail near the base of Picacho Mountain. The contributing water shed is 1.92 square miles with an elevation change of over 1050 ft. The community has 1 main drainage feature, which is a dam constructed on private property. It is not known if the dam was constructed to any engineering design standards. While this structure does not fall within the County's jurisdiction, the Old Picacho Drainage Master Plan was commissioned to determine the deficiencies and the potential improvements. The estimated cost of the improvement is \$8,650,000. Below is a map showing the contributing watershed.



Below is a map of the proposed improvements.

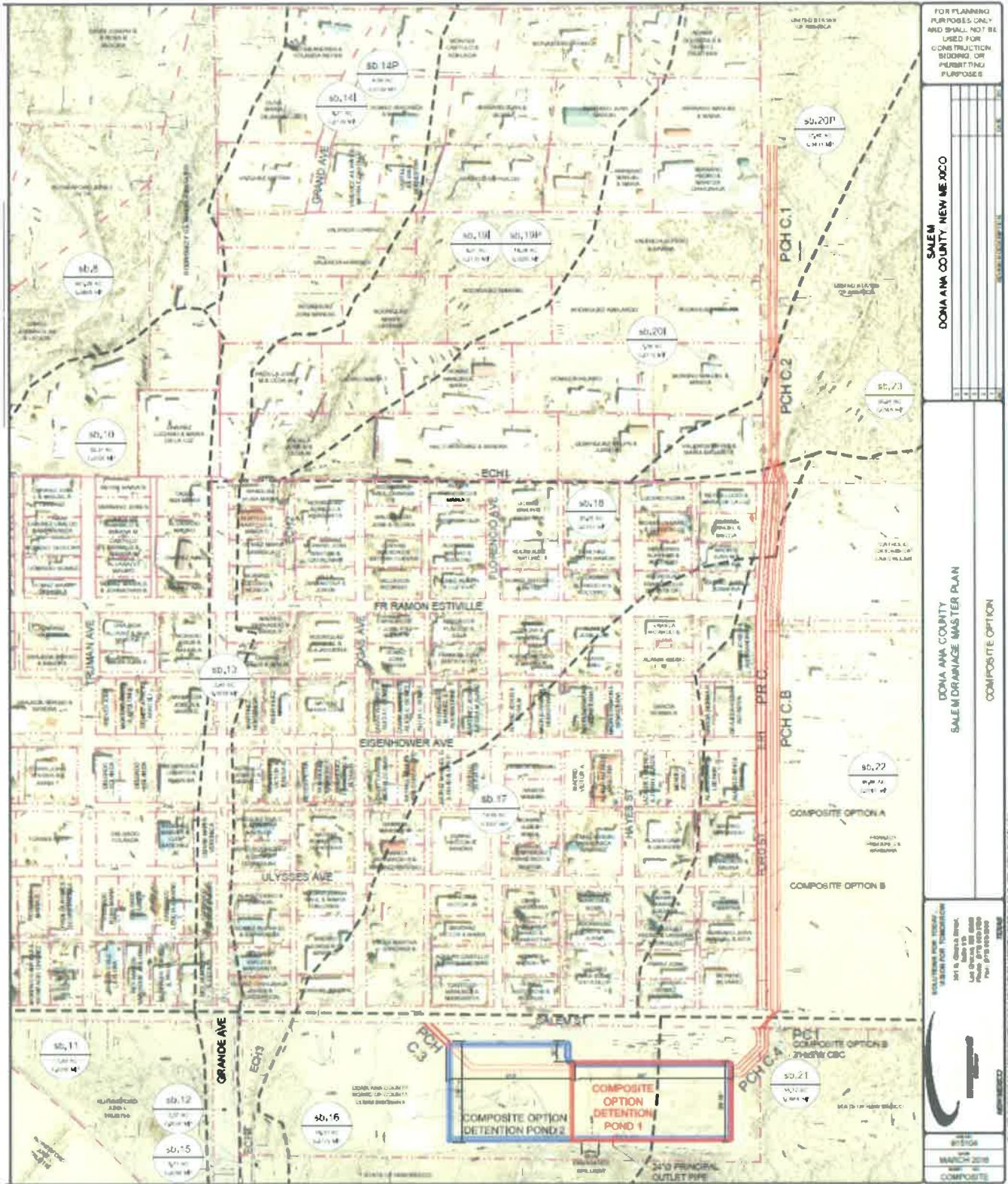


Salem

The Colonia of Salem is a small community located approximately 45 miles northwest of Las Cruces, NM, and 5.1 miles northwest of Hatch, NM. Interstate 25 passes through the basin and has many culverts that provide stormwater conveyance under I-25. The Salem watershed boundary contains four small dams or “floodwater retarding structures” designed and built by the USDA Soil Conservation Service in cooperation with the Caballo Soil and Water Conservation District. The dams were never intended to serve as flood control dams and therefore, do not meet the present design standards. The contributing watershed is approximately 14.5 square miles; however the sub-basin drainage areas to the four dams and outfall locations are small and range from about 1 square mile to approximately 3.7 square miles. Most of the area is considered to undeveloped range land with an elevation change of approximately 700 feet. The community of Salem is a developed urban area, and the valley areas below the dams are used as agricultural land. A Drainage Master Plan was completed in 2016 that was intended to present proposed options that would intercept stormwater runoff upstream of the developed area and utilize the controlled release of runoff through Salem without adverse affects to the residents. It was determined that the most cost effective solution is a combination of options that would include roadway improvements, reroute runoff from a major basin as well as the stormwater released by the South Salem Dam, and constructing a single detention pond. The proposed projects have an estimated cost of \$ 1,700,000. Below is a map showing the contributing watershed.



The following drawing shows the proposed improvements.



FOR PLANNING PURPOSES ONLY AND SHALL NOT BE USED FOR CONSTRUCTION BIDDING OR PERMITTING PURPOSES

NO.	DESCRIPTION	DATE

SALEM
DONA ANA COUNTY NEW MEXICO

DONA ANA COUNTY
SALEM DRAINAGE MASTER PLAN
COMPOSITE OPTION

SCALE: 1" = 400'

DATE: 11/20/2018

PROJECT: SALEM DRAINAGE MASTER PLAN

DESIGNED BY: [Signature]

CHECKED BY: [Signature]

APPROVED BY: [Signature]

SALEM
DONA ANA COUNTY
SALEM DRAINAGE MASTER PLAN
COMPOSITE OPTION

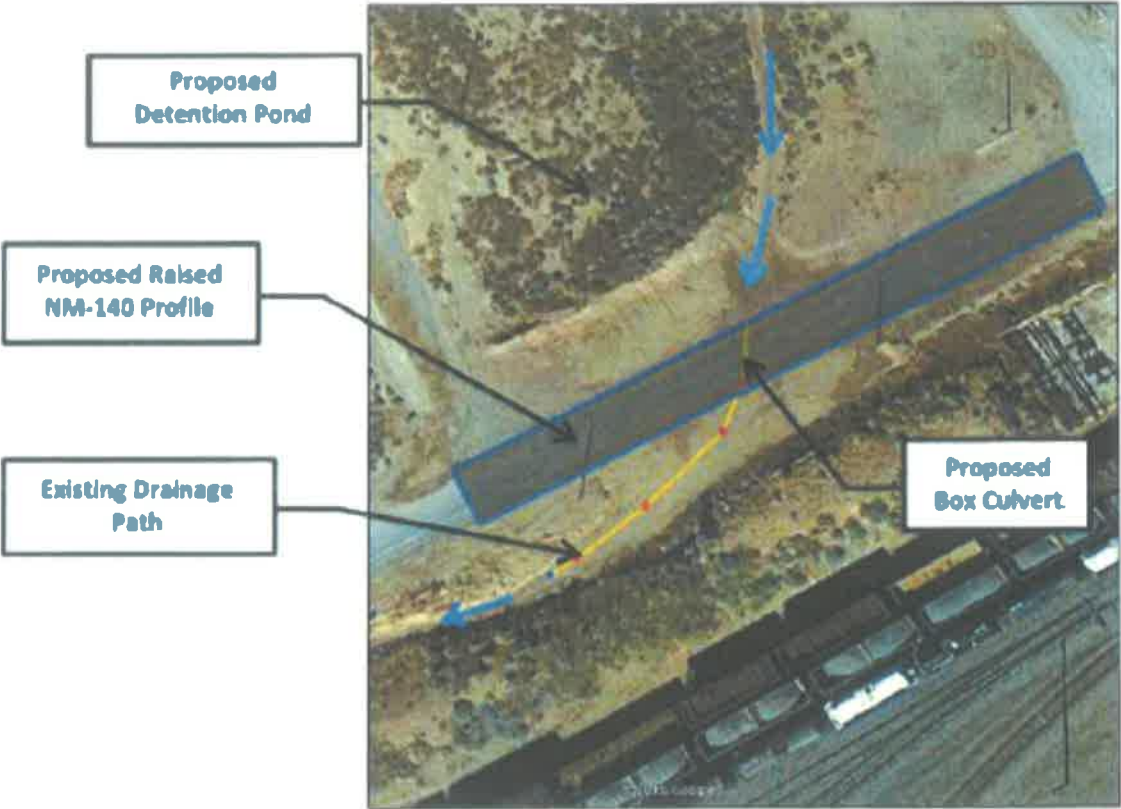
Rincon

Rincon is located along Interstate 25, approximately 33 miles north of Las Cruces, NM. Rincon lies north of the Rincon Arroyo, which contributes stormwater runoff to the Rio Grande to the south. Stormwater flows in the Rincon Arroyo only affect the community during extreme storm events and are beyond the scope of this project. The community of Rincon has inadequate flood control infrastructure to mitigate runoff generated from less frequent events in the watershed north of I-25. The contributing watershed is approximately 1.62 square miles with an elevation change of approximately 400 ft. A Drainage Master Plan was completed in 2014 that was intended to analyze existing drainage conditions in the contributing watershed, determine deficiencies and propose improvements. It was determine that the most cost effective solution includes construction of 2 channels to divert discharge to the Rincon Arroyo, onside drainage infrastructure improvements and roadway improvements. The proposed projects have an estimated cost of \$1,000,000. Below is a map showing the contributing watershed.



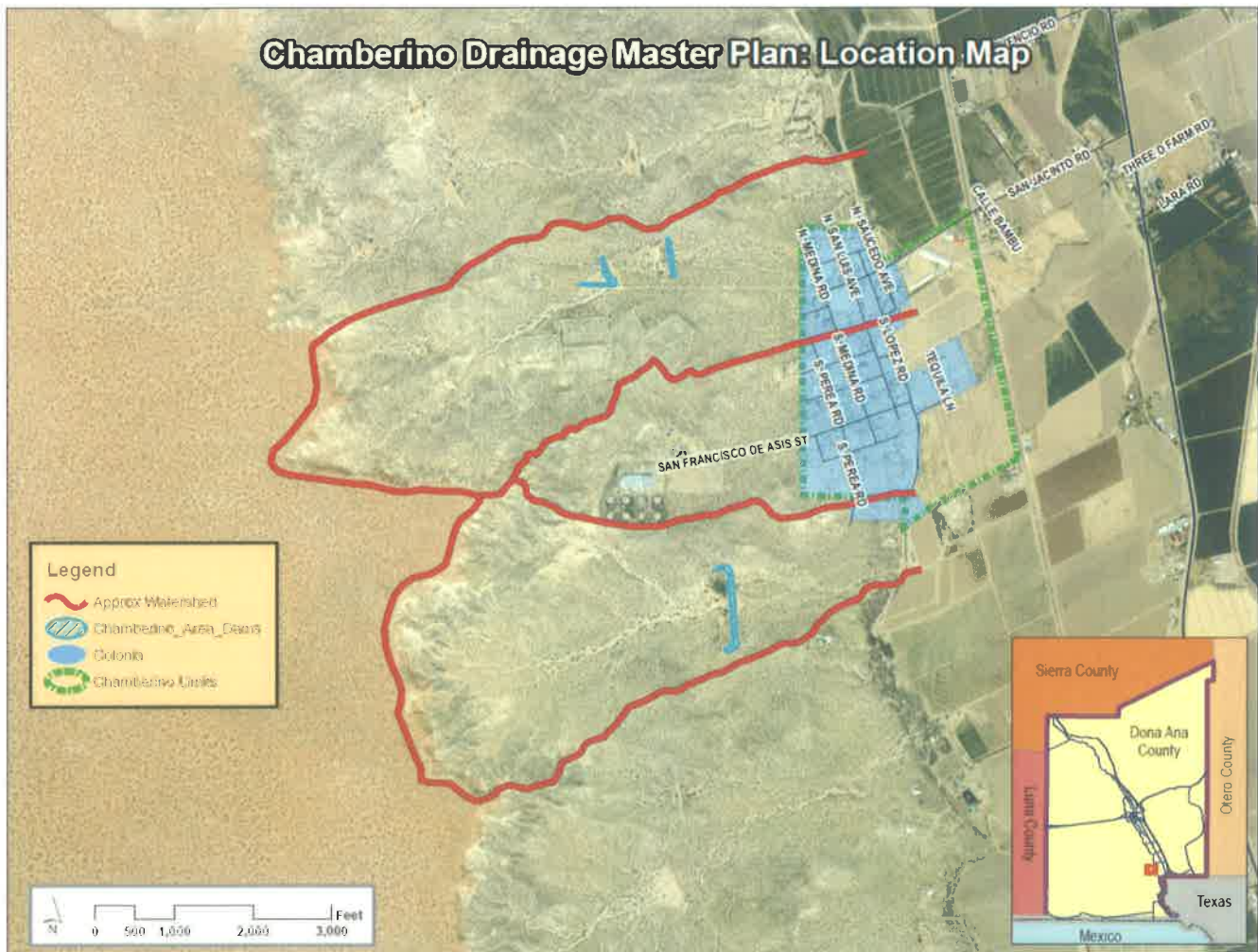
The following 3 aerial photos show the proposed improvements.





Chamberino

Chamberino is located approximately 24.4 miles southwest of Las Cruces, NM, and 20.8 miles northwest of Sunland Park, NM. Chamberino has several existing unregulated dams within the watershed, however they were never intended to protect people or homes and do not meet any of the current design standards. The top of the watershed's south western quadrant contains 5 abandoned treatment ponds with vast storage capacity that function as full retention basins. The contributing watershed is approximately 1.8 square miles with an elevation change of approximately 300 feet. A Drainage Master Plan was completed in 2016 that was intended to analyze existing drainage conditions in the contributing watershed, determine deficiencies and propose improvements. It was determined that the most cost effective solution is an option that diverts off-site flows around town and to redirect flows within the town where possible. This option includes the rehabilitation of an existing dam, construction of a diversion channel and construction of several retention ponds. The proposed projects have an estimated cost of \$ 2,700,000. Below is a map showing the contributing watershed.



Below is a map of proposed improvements for Chamberino.



APPENDIX D

WASTEWATER MANAGEMENT SYSTEMS

- **WASTEWATER SYSTEMS REFERENCE MAP**
- **PROJECT SUMMARIES**



04,600,200 18,490,27,600 36,800
 Feet
 9/28/2016

Legend

- Doña Ana County Wastewater Lines
- Camino Real Regional Utility Authority
- Major Roads
- Incorporated Municipal Boundary
- Doña Ana County Boundary



Chaparral Wastewater Treatment System Project

A 2000 Facility Plan estimated the cost for this project to be over \$35,000,000. As of today there are 4 completed phases totaling \$9,294,201, thus leaving approximately \$25,705,799 to complete the project. The following are the completed phases and cost:

- Phase 1A was completed on 7/2008 which included construction of the Chaparral treatment plant, a lift station and 206 service connections. Total cost – \$5,927,066
- Phase 1B was completed on 11/2009; was for construction of 58 service connections and a lift station. Total cost - \$1,685,608
- Phase 2A was completed on 2/2012; was for construction of 133 service connections. Total cost - \$585,787
- Phase 3A was completed on 5/2014; was for construction of 154 service connections. Total cost - \$1,095,740

The current phase is 1C which a lift station has been completed and construction of collection lines and force main is scheduled to begin next month. An estimated cost for this phase is \$3,190,000 and of which we have received \$2,246,886 leaving \$943,114 to complete this phase.

Asset Management Plan 2016

- Cost based on deferred maintenance, deficiency or life safety issues –replacement of an air valve actuator at an estimated cost of \$10,000.
- Cost based on total life cycle replacement of 10+ years is at \$736,700.
- Infrastructure Capital Improvement Plan (ICIP) request - \$920,685

South Central Wastewater Treatment Plant and Collection system upgrades and repairs

The treatment plant and collection system was constructed in 2003 to serve the communities of the South Central region of Doña Ana County. This region includes the following communities, Berino, Chamberino, Montana Vista, La Mesa, San Miguel and Vado/Del Cerro. Also, through an agreement with Lower Rio Grande Public Water Works Authority, we take wastewater flow from the Mesquite area and will soon include the Brazito area.

Currently, the County serves over 2,200 residents, 404 Mesquite residents and an estimated amount of 1,400 residents will be from the Brazito area.

The life expectancy of this system is 20 years. In order to protect, and continue to maintain and operate effectively repairs and improvements will be required. The County has invested over \$400,000 in the replacement of the UV system and manhole repairs.

Wastewater Treatment Plant

- Upgrade to deteriorating head-works structure
- An increase of bio-solids handling capacity
- Upgrade to the aeration system
- Concrete drying beds for sludge
- Grit chamber replacement
- Influent channel concrete repair

- Electrical equipment
 - Structural repairs
- ICIP request - \$3,625,000 includes engineering services.

Asset Management Plan 2016

- Cost based on deferred maintenance, deficiency or life safety issues - include the above mentioned issues is at an estimated cost of \$647,848.72.
- Cost based on total life cycle replacement of 10+ years is at \$5,507,950.

Wastewater Collection

- Lift station repairs/rehab
 - Manhole repairs/rehab
 - Main line replacements and extensions
- ICIP request - \$1,625,000

Rincon Wastewater Treatment Plant and Collection Systems

The plant was constructed in 2002 which serves over 90 households. Life expectancy is also 20 years.

Asset Management Plan 2016

- Treatment Plant - Cost based on deferred maintenance, deficiency or life safety issues - replacement of aeration system at an estimated cost of \$228,681.60.
- Treatment Plant - Cost based on total life cycle replacement of 10+ years is at \$407,500.

Salem Wastewater Treatment Plant

The plant was constructed in 2002 which serves over 220 households. Life expectancy is 20 years

Asset Management Plan 2016

- Treatment Plant - Cost based on deferred maintenance, deficiency or life safety issues - replacement of influent valves at an estimated cost of \$20,000
- Treatment Plant - Cost based on total life cycle replacement of 10+ years is at \$210,058.33.

Sleepy Farm/Vado

Residents of the Sleepy Farm area in Vado have requested the County to provide wastewater service due to septic tank issues that they are experiencing. Issues include leach field failures and standing septic water on the ground. With the assistance of the Ocotillo Institute for Social Justice and local community leaders we have met with them. During these meets we had an employee from NM Environment and a representative from a local septic tank business who offered free estimates to do individual systems assessments. Funding resource information from HUD and US Rural Development was passed on and made available for those who may need it for repairs or replacement of their septic systems.

The County with funding assistance from Border Environment Cooperation Commission (BECC) will be initiating a Preliminary Engineering and Environmental Report for this project. ICIP request - \$3,400,000.